

Actualtests.com

The Power of Knowing



Exam : 642-354

Title : Cisco Storage Network Support Specialist

Ver : 10.24.07

QUESTION 1:

Issuing the show role command to check a defined role in an MDS 9000 Series switch will produce the following output:

Role : Manage

VSAN Description :

vsan policy : deny Permitted vsans : 2-4

Rule Type Command-type Feature

1. permit config *
2. deny config fspf
3. permit debug zone
4. permit exec fcping

Which of the following two functions can a user with role Manage undertake?
(Choose two.)

- A. change fspf parameters
- B. configure FC port parameters for VSAN 3
- C. issue a debug command for a port
- D. configure zoning for all VSANs
- E. check connectivity for VSAN 2

Answer: B,E

QUESTION 2:

What two commands must be executed on an MDS 9000 family switch in order to change a dynamically assigned Domain ID 5 to a static Domain ID 10 for VSAN 10?
Choose two.

- A. switch(config-if)# shut fcdomain 5
- B. switch(config-if)# no shut fcdomain 10
- C. switch(config)# fcdomain domain 10
- D. switch(config)# fcdomain domain 10 static vsan 10
- E. switch(config)# fcdomain restart vsan 10
- F. switch(config)# fcdomain restart vsan 10

Answer: D,F

QUESTION 3:

Which command is used to display the list of hosts configured for Fabric Analyzer remote capture?

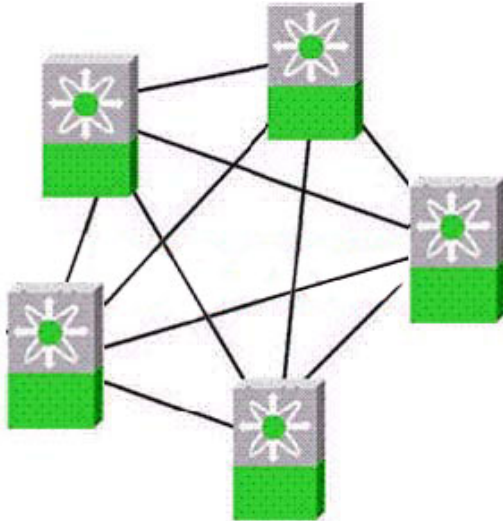
- A. show fcanalyzer

- B. clear fcanalyzer
- C. show remote fcanalyzer
- D. show fcanalyzer remote list

Answer: A

QUESTION 4:

Exhibit:



Each link shown is a 16-port PortChannel. What are the problems with the design?

- A. unpredictable hop count
- B. inherent oversubscription of ISLs
- C. low percentage of usable ports
- D. requires director-class switches for reliability

Answer: C

QUESTION 5:

Exhibit:

```
CertKillerA #sh int fc1/2
fc1/2 is down (Isolation due to no common vsans with peer on trunk)
Hardware is Fibre Channel SFP is short wave laser w/o OFC (SN)
Port WWN is 20:02:00:0d:ec:0c:7c:80
Admin port mode is E, trunk mode is on
Port vsan is 1
Receive data field Size is 2112
Beacon is turned off
minutes input rate 120 bits/sec, 15 bytes/sec, 0 frames/sec
```

Given the output from the show command in the exhibit, what does the error message indicate is wrong with the configuration?

- A. Trunk mode has been administratively set to E instead of TE.
- B. The port needs a shut/noshut to become active.
- C. The port has been incorrectly left in VSAN 1.

D. The trunk needs configured VSANs allowed on both sides.

Answer: D

QUESTION 6:

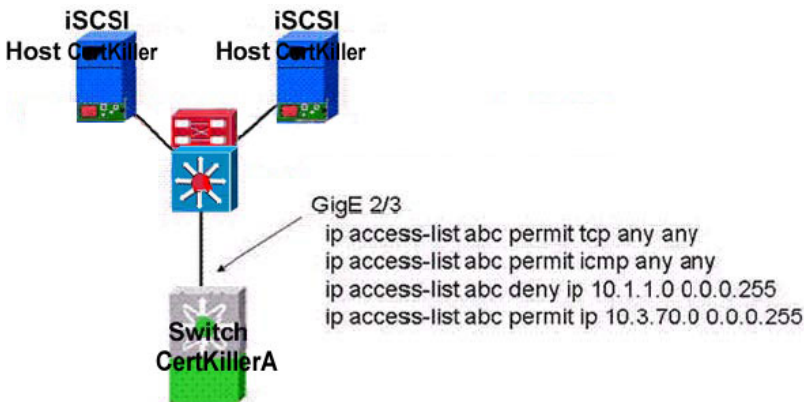
Which three of these statements are attributes of the Cisco SET? (Choose three.)

- A. SET configuration is persistent.
- B. SBCCS and SCSI commands are supported.
- C. SET initiators can only communicate with SET targets.
- D. SET requires SAN-OS 2.0 or higher and the SAN Extension IP license.
- E. Only SCSI read/write commands are supported.

Answer: C,D,E

QUESTION 7:

Exhibit:



Consider the ACL applied to a GigE 2/3 on a Cisco MDS switch. What happens to traffic that does not match any of the rules?

- A. The traffic is allowed to pass through the interface because there is an implicit permit applied.
- B. The traffic is not allowed to pass through the interface because there is an implicit deny applied.
- C. The traffic is not allowed to pass through the interface because there is an implicit deny applied.
- D. The ACL is invalid and will not be accepted, and as a result the traffic will be allowed to pass.

Answer: B

QUESTION 8:

The Call Home feature provides what type of notification when critical events occur?

- A. SNMP
- B. syslog
- C. PBX
- D. e-mail

Answer: D

QUESTION 9:

Certkiller .com has a multiswitch fabric including Switch A and Switch B. An administrator of Switch A creates the following zoneset and successfully activates it:

```
zoneset name ZoneSet1 vsan 1
zone name Zone1 vsan 1
pwwn21:01:00:e0:8b:3c:03:b6
pwwn21:01:00:e0:8b:3c:55:bb
```

Later in the day a second administrator creates the following zone set on Switch B:

```
zoneset name ZoneSet2 vsan 1
zone name Zone1 vsan 1
pwwn21:01:00:e0:8b:3c:03:b6
pwwn21:01:00:e0:8b:3c:55:aa
```

What happens when the administrator of Switch B attempts to activate ZoneSet2?

- A. ZoneSet2 becomes the active zoneset for both Switches A and B.
- B. The fabric segments and ZoneSet2 become the active zoneset for Switch B only.
- C. The fabric segments and ZoneSet 2 become the active zoneset for Switch A only.
- D. The fabric segments and ZoneSet 1 remain the active zone set for Switch B, while ZoneSet 2 becomes the active zoneset for Switch A.

Answer: A

QUESTION 10:

The Cisco Traffic Analyzer is required to gather historical data for what type of information?

- A. Class F traffic
- B. SCSI session data
- C. Class 2 errors
- D. FC framing errors

Answer: B

QUESTION 11:

An administrator finds these lines in the running configuration file:

```
interface vsan1 ip address 10.10.10.3 255.255.255.0 no shut
```

What is the impact of this entry?

- A. The entry sets the IP address on the management port and places it in VSAN 1.
- B. The entry creates an interface for IPFC.
- C. The entry sets up a common IP address to be shared by all GigE ports in VSAN 1.
- D. The entry sets up a default gateway for VSAN 1.

Answer: B

QUESTION 12:

Which three of these upper-level protocols are supported by FC-4? (Choose three.)

- A. HIPPI
- B. SBCCS
- C. OSPF
- D. SCSI
- E. PPTP
- F. CDP

Answer: A,B,D

QUESTION 13:

Which two of these items are advantages of configuring static domain IDs? (Choose two.)

- A. facilitates troubleshooting
- B. reduces FSPF link-state updates
- C. increases switch throughput
- D. ensures that persistent FCIDs will not change
- E. enables LUN masking

Answer: A,D

QUESTION 14:

You have been asked to install a Cisco MDS switch for Certkiller .com. If you accept all installation defaults, which of these will occur?

- A. default port state: shut default zone policy: deny

- B. default port state: no shut default zone policy: deny
- C. default port state: shut default zone policy: permit
- D. default port state: no shut default zone policy: permit

Answer: A

QUESTION 15:

What are four valid protocols for copying software to the MDS 9000 family switches? (Choose four.)

- A. Remote Copy Service
- B. Secure Copy Protocol
- C. Trivial File Transfer Protocol
- D. File Transfer Protocol
- E. Secure Trivial File Transfer Protocol
- F. Secure File Transfer Protocol

Answer: B,C,D,F

QUESTION 16:

Which three CLI commands can be used to view remaining buffer-to-buffer credits? (Choose three.)

- A. show interface fc x/y
- B. show interface fc x/y brief
- C. show interface fc x/y counters
- D. show interface fc x/y bbcredit
- E. show interface fc x/y flow-control

Answer: A,C,D

QUESTION 17:

You are looking at the LEDs on an MDS 9500 Supervisor module. If the Status LED is orange, which statement is true?

- A. The module cannot boot because of a corrupted image on the flash.
- B. The diagnostic test failed. The module is not operational because a fault occurred.
- C. The module is booting or running diagnostics.
- D. Incompatible power supplies are installed.

Answer: C

QUESTION 18:

When installing the Port Analyzer Adapter, how do you connect the Fibre Channel port to the MDS switch?

- A. single-mode fiber and SC to LC connector
- B. multimode fiber and LC to LC connector
- C. single-mode fiber and LC to LC connector
- D. multimode fiber and SC to LC connector

Answer: B

QUESTION 19:

Certkiller .com is planning a SAN deployment using Fibre Channel connections from a central, highly secure data center to several less secure branch offices. Which of these security features would allow you to disable all branch office switch management ports and yet still maintain the complete suite of TCP/IP-based SAN management utilities?

- A. IPSec
- B. Port Mode Security
- C. Port Security
- D. Overlay VSAN

Answer: D

QUESTION 20:

An administrator reviews the running configuration of a switch that a junior administrator has prepared to be placed in a heterogeneous SAN environment. This environment includes three different brands of Fibre Channel switches. In this particular environment, only VSAN 1 is being used.

Which of these attributes suggests that the switch has not been properly configured?

- A. A static domain ID has been set to 0x21.
- B. src-dst-ox load balancing has been selected.
- C. Interop mode 3 has been selected.
- D. FCC has been enabled.

Answer: A

QUESTION 21:

Which of these modules performs hardware compression using Mode 1?

- A. MPS-14/2 module
- B. IPS-4
- C. SSM
- D. IPS-8
- E. Supervisor Module

Answer: A

QUESTION 22:

When using interop mode on an MDS 9000 switch, what is the Domain ID range?

- A. 1 to 97
- B. 127 to 239
- C. 97 to 239
- D. 97 to 127
- E. 1 to 127

Answer: D

QUESTION 23:

Exhibit:

```
show vsan
vsan 1 information
name:VSAN0001 state:active
in-order guarantee:no interoperability mode:no
loadbalancing:src-id/dst-id/oxid
vsan 2 information
name:VSAN0002 state:active
in-order guarantee:no interoperability mode:no
loadbalancing:src-id/dst-id/oxid
vsan 7 information
name:VSAN0007 state:active
in-order guarantee:no interoperability mode:no
loadbalancing:src-id/dst-id/oxid
vsan 100 information
name:VSAN0100 state:active
in-order guarantee:no interoperability mode:no
loadbalancing:src-id/dst-id/oxid
vsan 4094:isolated vsan
```

When a VSAN is deleted where do its port members get transferred?

- A. vsan 1
- B. vsan 100
- C. vsan 4094
- D. vsan 2

Answer: C

QUESTION 24:

Which two of these procedures should you perform to troubleshoot connectivity between a Microsoft Windows host and its SAN-attached storage? (Choose two.)

- A. Check the Windows Disk Manager to verify that storage is visible.
- B. Convert all file systems to NTFS format.
- C. Check the Cisco Device Manager to verify that the HBA link is up.
- D. Ensure that the HBA supports both 1- and 2-gigabit speeds.

Answer: A,C

QUESTION 25:

What command would a storage administrator use to determine the number of frames that exit the FC2/6 port?

- A. show fc 2/6
- B. fctrace
- C. debug fibrechannel port 2/6
- D. show interface counters brief

Answer: D

QUESTION 26:

DRAG DROP

Match the troubleshooting SAN-OS command with its corresponding output, You may not use all options.

SAN-OS Commands, Select from these

- CertKiller1# debug vsan events
- CertKiller1# debug vsan membership
- CertKiller1# fcping
- CertKiller1# ping
- CertKiller1# show vsan 1 membership
- CertKiller1# show vsan 1 membership
- CertKiller1# show zone vsan 1

Output

- Displays all ports that belong to the specified VSAN
- Displays events occurring in the VSAN membership database
- Displays the zones and associated PWWNs within the specified VSAN.
- Verifies FibreChannel connectivity to a remote device

SAN-OS Commands, place here

- Place here
- Place here
- Place here
- Place here

Answer:

SAN-OS Commands, Select from these

CertKiller1# debug vsan events
CertKiller1# ping
CertKiller1# show vsan 1 membership

Output	SAN-OS Commands, place here
Displays all ports that belong to the specified VSAN	CertKiller1# show vsan 1 membership
Displays events occurring in the VSAN membership database	CertKiller1# debug vsan membership
Displays the zones and associated PWWNs within the specified VSAN.	CertKiller1# show zone vsan 1
Verifies FibreChannel connectivity to a remote device	CertKiller1# fcping

QUESTION 27:

Your storage administrator notices that the power LEDs on the Cisco MDS 9509 supervisors are displaying an orange color. What does this color indicate?

- A. The switch has insufficient power and will shut down.
- B. The switch has insufficient power for all modules.
- C. A sensor in the power supply has discovered a fault that may lead to a power supply failure in the near future.
- D. There is insufficient power to operate both supervisor modules.

Answer: B

QUESTION 28:

Certkiller .com wants to disable CHAP authentication for a specific interface. Which command or commands should be issued?

- A. switch(config)# interface gig 2/1 switch(config-if)# iscsi authentication none
- B. switch(config)# interface fc2/1 switch(config-if)# iscsi authentication none
- C. switch(config)# interface iscsi 2/1 switch(config-if)# iscsi authentication none
- D. switch(config)# interface mgmt0 switch(config-if)# iscsi authentication none

Answer: A

QUESTION 29:

Which services are supported by a Cisco SAN-OS AAA configuration?

- A. Telnet, SSH, FM and DM logins

- B. console login, FC-SP authentication, FTP
- C. FC-SP authentication, FM and DM logins, TFTP
- D. iSCSI authentication, FTP, FC-SP authentication

Answer: A

QUESTION 30:

Inter-VSAN Routing is interoperable with other vendor switches as long as MDS switches are set to inter-op 1 mode. Where in the fabric can the other vendor switches reside for a successful implementation of Inter-VSAN Routing?

- A. core switches
- B. edge switches
- C. distribution switches
- D. remote site switches

Answer: B

QUESTION 31:

Which license is required on switches that are going to implement LUN zoning?

- A. Storage Services Enabler
- B. Enterprise license
- C. Fabric Manager Server license
- D. SAN Extension over IP license

Answer: B

QUESTION 32:

Which tool is used to diagnose protocol errors, credit starvation, and malformed or nonstandard compliant frames or primitives on a Fibre Channel network?

- A. Port Analyzer Adapter
- B. Fabric Analyzer
- C. external Fibre Channel Protocol Analyzer
- D. Fabric Manager

Answer: C

QUESTION 33:

Which two of these environments suggest the use of FCIP Write Acceleration?
(Choose two.)

- A. remote tape backup
- B. PortChannel links between sites
- C. applications that support multiple outstanding I/Os
- D. fast network with minimal delays
- E. DWDM links

Answer: B,C

QUESTION 34:

Your Cisco MDS director has 224 Fibre Channel ports and two power supplies running with 110 VAC. Which of the following may occur if one power supply fails?

- A. The switch shuts down immediately.
- B. Insufficient power is available to operate all modules, so some will be shut down.
- C. The standby supervisor shuts down.
- D. The switch shuts down after a five-minute grace period.

Answer: B

QUESTION 35:

You have been asked to implement a security policy that will reduce the potential of unauthorized access to the fabric by WWN spoofing. Which security feature was designed to address this threat?

- A. port security
- B. port mode security
- C. FCSP
- D. DH-CHAP
- E. port-based zoning

Answer: A

QUESTION 36:

Which command will send system messages to a remote syslog server?

- A. Which command will send system messages to a remote syslog server?
- B. switch(config)# logging 192.168.0.198 logfile SANlog
- C. switch(config)# logging /var/log/logfile
- D. switch# copy log:SANlog volatile:log.txt

Answer: A

QUESTION 37:

Certkiller .com needs support for their mainframe application that uses SBCCS. Which of these protocols specifically addresses this need?

- A. FICON
- B. Fibre Channel
- C. iSCSI
- D. FCIP
- E. IP

Answer: A

QUESTION 38:

What protocol can be used in a multivendor environment to enable greater bandwidth between a Cisco MDS 9000 switch in interop mode and another vendor FC switch?

- A. FSPF
- B. port channel
- C. FCC
- D. RDL

Answer: A

QUESTION 39:

Certkiller .com wants to set up a SPAN tunnel between switch A and switch B. Which three of the following configuration requirements are needed to establish a SPAN tunnel between switches A and B? (Choose three.)

- A. Trunking must be enabled between switch A and switch B.
- B. VSAN interfaces must be configured.
- C. A minimum of two VSANs must be active on each switch.
- D. IP routing must be enabled on each switch.
- E. A PortChannel must be configured between switch A and switch B.
- F. A minimum of two links must be configured between switch A and switch B.

Answer: A,B,D

QUESTION 40:

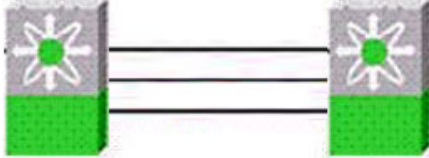
An administrator finds the following lines in the running configuration file:
interface vsan1 ip address 10.10.10.3 255.255.255.0 no shut

- A. the IP address on the management port, placing it in VSAN 1
- B. a management VSAN on the switch
- C. a common IP address to be shared by all GigE ports in VSAN 1
- D. a default gateway for VSAN 1

Answer: B

QUESTION 41:

Exhibit:



You have been asked to convert three existing ISLs into a PortChannel as nondisruptively as possible. Which approach will best accomplish this?

- A. Place all three ISLs into a PortChannel, because PortChannel creation is a nondisruptive operation.
- B. Convert the ISLs into an EISL and then place them into a PortChannel.
- C. Place one link into a single-link PortChannel and then add the other two links to the PortChannel.
- D. Ensure that the VSAN allowed lists on both ends of each link are identically configured, then create the three-link PortChannel.

Answer: C

QUESTION 42:

Which of these tasks must be accomplished to successfully perform the initial installation of a Cisco MDS switch?

- A. Assign a read-only SNMP community string.
- B. Assign a read-write SNMP community string.
- C. Enable the SSH or Telnet service.
- D. Define an NTP server.
- E. Set the zoneset distribution policy.

Answer: E

QUESTION 43:

Which of these Cisco Fabric Manager debugging tools can compare the current configuration with a previously saved configuration file?

- A. Switch Health Analysis

- B. Fabric Configuration Analysis
- C. End-to-End Connectivity Analysis
- D. Zone Merge Analysis

Answer: B

QUESTION 44:

A role to permit operations in multiple VSANs has been created for a VSAN administrator. Which of the following is correct?

- A. The VSAN administrator can change VSAN membership of F or FL ports among these VSANs.
- B. The VSAN administrator can change VSAN membership of F or FL ports among these VSANs.
- C. It does not matter what role or permissions have been configured for the administrator. Port membership cannot be changed without first removing the ports from the membership of the associated VSANs.
- D. It does not matter what role or permissions have been configured for the administrator. Any port type can be changed without removing the ports from the membership of the associated VSANs.

Answer: A

QUESTION 45:

The system administrator receives the following message: "Error disabled - Possible port channel misconfiguration". What three things should the administrator verify in the PortChannel configuration? (Choose three.)

- A. Each switch on either side of the PortChannel is connected to the same number of interfaces.
- B. There are no more than 32 links aggregated together to form the PortChannel.
- C. The ports on the switch configured in the PortChannel are on the same switching module.
- D. Each ISL interface belongs to the same VSAN.
- E. Links in the PortChannel were not changed after the PortChannel was configured.

Answer: A,D,E

QUESTION 46:

A system administrator has just connected two switches. The administrator configured identical values for the following items on both switches. Which of these items is most likely the cause of fabric isolation?

- A. port speeds
- B. interface types
- C. domain ID
- D. timeout values
- E. VSAN_ID

Answer: C

QUESTION 47:

Which two of these logging statements are true? (Choose two.)

- A. Call Home message level 0 is most urgent and level 7 is least urgent, whereas the syslog level 9 is most urgent and level 0 is least urgent.
- B. Syslog message level 0 is most urgent and level 7 is least urgent, whereas the Call Home message level 9 is most urgent and level 0 is least urgent.
- C. Syslog message level 7 is most urgent and level 0 is least urgent, whereas the Call Home message level 9 is most urgent and level 0 is least urgent.
- D. Accounting logs can be stored locally and sent to remote AAA servers.
- E. Go to logs > syslog > setup in Device Manager to view the local accounting log.

Answer: B,D

QUESTION 48:

Which three characteristics does an SD port have? (Choose three.)

- A. It ignores buffer-to-buffer credits.
- B. It allows data traffic in the egress (tx) and ingress (rx) directions.
- C. It does not require a device or an analyzer to be physically connected.
- D. Port mode cannot be changed if it is being used for a SPAN session.

Answer: A,C,D

QUESTION 49:

Certkiller .com has deployed a Cisco MDS 9216i, with the optional slot populated with a 16-port line card. Which two of these FCIP security mechanisms can be provided by the switch? (Choose two.)

- A. LUN mapping
- B. LUN masking
- C. VLAN trunking
- D. IPSec encryption

Answer: D

QUESTION 50:

Which three options allow or enable nondisruptive upgrades? (Choose three.)

- A. IPS module software upgrades
- B. dual supervisor modules on a Cisco MDS 9500 Series switch
- C. using the install-all command
- D. upgrading the loader
- E. installing a license
- F. using the reload command

Answer: B,C,E

QUESTION 51:

Which three statements describe automatically supported, basic zone features (no additional configuration required) in the Cisco MDS 9000 Family of switches? (Choose three.)

- A. A VSAN contains the zone sets.
- B. Zone reactivation can disrupt existing traffic.
- C. A zone or zone set with the same name can exist in each VSAN.
- D. Hard zoning can be disabled.
- E. Active zone sets are preserved across switch reboots.
- F. Default zoning behavior is to distribute the Full Zone Database.

Answer: A,C,E

QUESTION 52:

DRAG DROP

A system administrator suspects possible host/device connectivity problems. The show interface command displays the fc1/5 interface in VSAN 200 as Administratively Down. Drag and drop the next troubleshooting commands the administrator should enter in order from top to bottom.

SAN-OS Commands, Select from these

- CertKiller1# fcping pwnn
21:00:00:e0:8b:09:22:8c vsan 200
- CertKiller1(config-if)# no shutdown
- CertKiller1# show flogi database vsan
200
- CertKiller1# show zoneset active

SAN-OS Commands, place here

- Place first here
- Place second here
- Place third here
- Place fourth here

Answer:

SAN-OS Commands, place here

- CertKiller1(config-if)# no shutdown
- CertKiller1# show flogi database vsan
200
- CertKiller1# fcping pwnn
21:00:00:e0:8b:09:22:8c vsan 200
- CertKiller1# show zoneset active

QUESTION 53:

After performing the initial switch configuration by running the setup utility, an administrator notices that ports configured to connect to other Cisco MDS 9000 switches invariably come up as E_Ports rather than TE_Ports. Which error was made at initial configuration?

- A. VSAN capabilities were not enabled.
- B. Default switchport trunk mode was set to auto.
- C. Full zoneset distribution was not enabled.
- D. Default switchport trunk mode was set to on.

Answer: B

QUESTION 54:

DRAG DROP

Drag the backup technology on next to its respective definition.

Backup Technology, Select from these

- NSAB
- LAN-free backup
- Server free backup
- traditional backup

Definition

- A generic term for a backup methodology that moves data over a SAN without using LAN resources.
- A media server offloads the data movement operation to devices, which allows the media server to focus on the coordination functions needed to complete the backup.
- The application server is not involved in moving the data. The data can be moved by either a media server or an NSAB device.
- The backup server is involved with controlling the backup as well as moving the data to a tape drive directly attached or over the network.

Backup Technology, place here

- Place here
- Place here
- Place here
- Place here

Answer:

Definition

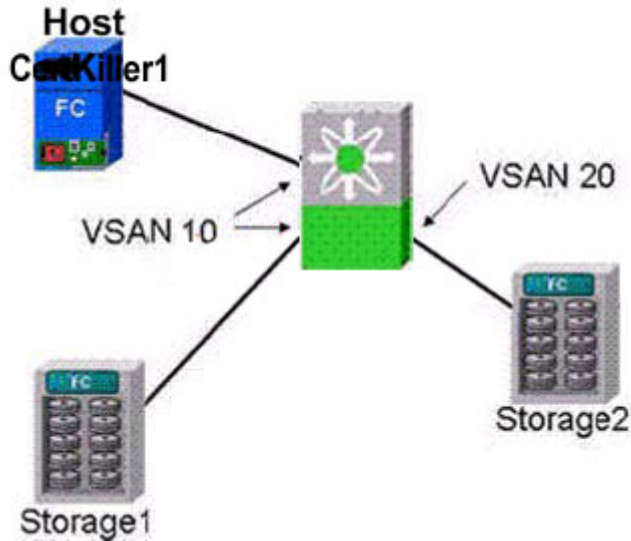
- A generic term for a backup methodology that moves data over a SAN without using LAN resources.
- A media server offloads the data movement operation to devices, which allows the media server to focus on the coordination functions needed to complete the backup.
- The application server is not involved in moving the data. The data can be moved by either a media server or an NSAB device.
- The backup server is involved with controlling the backup as well as moving the data to a tape drive directly attached or over the network.

Backup Technology, place here

- LAN-free backup
- NSAB
- Server-free backup
- traditional backup

QUESTION 55:

Exhibit:



Host Certkiller 1 and Storage1 are in VSAN 10 and have been communicating successfully. An administrator creates and activates an IVR zoneset enabling Host1 and Storage2 to communicate. Unexpectedly, after this new IVR zoneset is activated, Host Certkiller 1 loses connectivity with Storage1. Why did this happen?

- A. The default zone policy in VSAN 10 is set to permit.
- B. The default zone policy in VSAN 10 is set to permit.
- C. The zoneset distribution policy for VSAN 10 is set to full.
- D. Standard zones and IVR zones cannot coexist in the same VSAN.

Answer: A

QUESTION 56:

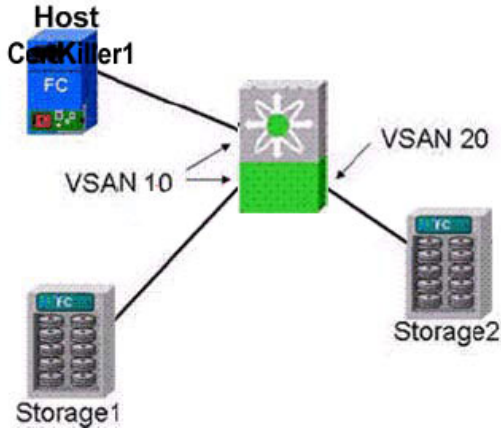
Which MDS 9000 feature is defined by a standard specification that enables various network monitors and console systems to exchange network-monitoring data?

- A. RMON
- B. SNMPv3
- C. SNMP
- D. POST

Answer: A

QUESTION 57:

Exhibit:



Certkiller .com has lost communication with a host. The customer enters the show interface command for the port with the host connection. Given the output from the show interface command in the above exhibit, which steps should the customer perform to continue troubleshooting the port?

- A. switch # show vsan membership if the port does not appear in a VSAN
switch(config-if)# shutdown switch(config-if)# no shutdown
- B. switch# show flogi database vsan 200 if the port does not appear in VSAN 200
switch(config-if)# shutdown switch(config-if)# no shutdown
- C. switch# show flogi database if the port does not appear in the FLOGI database
switch# debug fcns events register vsan 99 switch(config-if)# shutdown
switch(config-if)# no shutdown
- D. switch# show environment if the port does not appear in the output switch#
debug fcns events register vsan 99 switch(config-if)# shutdown switch(config-if)# no
shutdown

Answer: C

QUESTION 58:

What is the result of entering the command: switch (config-role-vsan)# permit vsan 15-20?

- A. The command adds the permission for this role to perform commands for VSANs 15 through 20. All other configured VSANs in this role would be denied.
- B. The command removes the permission for this role to perform commands or VSANs 15 and 20. All other configured VSANs in this role would be permitted.
- C. The command removes permission for all VSANs in this role.
- D. It is not a valid command since the command must be entered at the switch (config-role-policy-vsan)# level.

Answer: A

QUESTION 59:

DRAG DROP

Drag the TCP/IP configuration commands next to the appropriate result.

SAN-OS Commands, Select from these

- CertKiller1(config)# interface port-channel 10
- CertKiller1(config)# interface gigabitethernet 2/2
CertKiller1(config-if)# switchport mtu 3000
- CertKiller1(config-if)# ip address 10.1.1.1 255.255.255.0
- CertKiller1(config-if)# switchport promiscuous-mode on
- CertKiller1(config-if-vrrp)# address 10.1.1.100

Result

- All packets are received by the Gigabit Ethernet interface, those not destined for this interface are discarded
- Configures the maximum size of the transmission frame.
- Configures the specified aggregate links
- Configures the virtual IP address for the selected VRRP group (identified by the VR ID)
- Enters the IP address and IP mask for the specified interface

SAN-OS Commands, place here

- Place command here
- Place command here
- Place command here
- Place command here
- Place command here

Answer:

Result

- All packets are received by the Gigabit Ethernet interface, those not destined for this interface are discarded
- Configures the maximum size of the transmission frame.
- Configures the specified aggregate links
- Configures the virtual IP address for the selected VRRP group (identified by the VR ID)
- Enters the IP address and IP mask for the specified interface

SAN-OS Commands, place here

- CertKiller1(config-if)# switchport promiscuous-mode on
- CertKiller1(config)# interface gigabitethernet 2/2
CertKiller1(config-if)# switchport mtu 3000
- CertKiller1(config-if)# ip address 10.1.1.1 255.255.255.0
- CertKiller1(config-if-vrrp)# address 10.1.1.100
- CertKiller1(config)# interface port-channel 10

QUESTION 60:

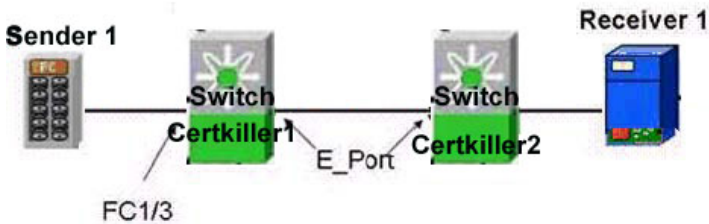
What is the default policy when defining role-based access for a VSAN?

- A. Deny
- B. Permit
- C. Permit only for the default VSAN.
- D. There is no default role policy for a VSAN.

Answer: B

QUESTION 61:

Exhibit:



An administrator determines that Sender 1 is generating traffic faster than Receiver 1 can process it. To reduce the amount of traffic entering the fabric, the administrator turns on FCC on both switches. What will be the effect of this action if Switch Certkiller 2 detects congestion caused by excessive traffic being sent from Sender 1 to Receiver 1?

- A. Switch Certkiller 2 will send a quench message to Switch Certkiller 1, which will use Fibre Channel flow control to reduce ingress traffic at fc1/3.
- B. No effect will take place because FCC is only effective if the sender and receiver are on the same switch.
- C. Switch Certkiller 1 will temporarily shut down fc1/3.
- D. There will be no effect because FCC quench messages are only sent across TE_Ports and EISLs.

Answer: D

QUESTION 62:

Certkiller.com wants to prioritize only traffic going from pWWN 23:15:00:05:30:00:2a:1f to FCID 0x12ee00.

Which set of commands will classify the appropriate traffic?

- A. `switch(config)# qos enable`
`switch(config)# qos class-map MyClass`
`switch(config)# qos class-map MyClass match-any`
`switch(config-cmap)# match source-wwn 23:15:00:05:30:00:2a:1f`
`switch(config-cmap)# match destination-address 0x12ee00`
- B. `switch(config)# qos enable`
`switch(config)# qos class-map MyClass`
`switch(config-cmap)# match source-wwn 23:15:00:05:30:00:2a:1f`
`switch(config-cmap)# match destination-address 0x12ee00`
- C. `switch(config)# qos enable`
`switch(config)# qos class-map MyClass`
`switch(config)# qos class-map MyClass match-all`
`switch(config-cmap)# match destination-address 0x12ee00`
- D. `switch(config)# qos enable`
`switch(config)# qos class-map MyClass`
`switch(config)# qos class-map MyClass match-all`
`switch(config-cmap)# match destination-wwn 23:15:00:05:30:00:2a:1f`
`switch(config-cmap)# match destination-address 0x12ee00`

Answer: D

QUESTION 63:

The output from the switch show interface command indicates that the link from a host comes up as an FL_Port. The switch port is configured as auto. Which three of these HBA configurations could cause this scenario? (Choose three.)

- A. the HBA is configured as an N_Port
- B. the HBA is configured as an NL_Port
- C. the HBA supports only NL mode
- D. the HBA is configured as a TE_Port
- E. the HBA supports only FC-AL technology
- F. the HBA is configured as an TL_Port

Answer: B,C,E

QUESTION 64:

Which of these protocols supports in-band SAN management?

- A. FCIP
- B. IPFC
- C. FC-SP
- D. FCC

Answer: B

QUESTION 65:

DRAG DROP

Drag the Cisco analysis tool next to its appropriate description.

Cisco Analysis Tool

- End-to-End Connectivity
- Fabric Configuration Analysis
- Swich Health Analysis
- Zone Mege Analysis

Description

Cisco Analysis Tool , place here

Compares the configurations of all Cisco MDS switches in a fabric Manager, verifying status of all critical MDS system, module, port, and Fibre Channel services

Place here

Determines if **switches will connect** successfully without fabric isolation due to mismatched port membership

Place here

Utilizes FC ping to verify interconnections between Cisco MDS switches and end-device (HBAs and storate devices) in a particular VSAN

Place here

Runs an in-depth switch analysis with Fabric Manager, verifying status of all critical MDS system, module, port, and Fibre Channel servies

Place here

Answer:

Cisco Analysis Tool

Description

Cisco Analysis Tool , place here

Compares the configurations of all Cisco MDS switches in a fabric Manager, verifying status of all critical MDS system, module, port, and Fibre Channel services

Fabric Configuration Analysis

Determines if **switches will connect** successfully without fabric isolation due to mismatched port membership

Zone Mege Analysis

Utilizes FC ping to verify interconnections between Cisco MDS switches and end-device (HBAs and storate devices) in a particular VSAN

End-to-End Connectivity

Runs an in-depth switch analysis with Fabric Manager, verifying status of all critical MDS system, module, port, and Fibre Channel servies

Swich Health Analysis

QUESTION 66:

What MDS feature can be used to notify an administrator or call center that a serious event has occurred in the fabric?

- A. Call Home
- B. FCC
- C. FLOGI
- D. Logging
- E. SPAN

Answer: A

QUESTION 67:

Exhibit:

```
Certkiller1# show zoneset active
zoneset name ZoneSet1 vsan 1
zone name Zone1 vsan 1
  pwwn 50:06:0e:80:03:5c:5c:03
  pwwn 50:00:00:e0:69:a1:b9:fc

zone name Zone2 vsan 1
  pwwn 10:00:00:e0:02:21:df:ef
  pwwn 20:00:00:e0:69:a1:b9:fc

zone name Zone3 vsan 1
  fwwn 20:42:00:05:30:0c:63:9e
  fwwn 20:43:00:05:30:0c:63:9e

zone name zone-hr vsan 2
  pwwn 50:06:0e:80:03:5c:5c:01
  pwwn 20:00:00:e0:69:41:a0:12
  pwwn 20:00:00:e0:69:41:98:93

Certkiller1 # show zoneset
zoneset name ZoneSet1 vsan 1
zone name Zone1 vsan 1
  pwwn 50:06:0e:80:03:5c:5c:03
  pwwn 20:00:00:e0:69:a1:b9:fc

zone name Zone2 vsan 1
  pwwn 10:00:00:e0:02:21:df:ef
  pwwn 20:00:00:e0:69:a1:b9:fc

zone name Zone3 vsan 1
  fwwn 20:42:00:05:30:0c:63:9e
  fwwn 20:43:00:05:30:0c:63:9e

zone name zone-hr vsan 2
  pwwn 50:06:0e:80:03:5c:5c:01
  pwwn 20:00:00:e0:69:41:a0:12
  pwwn 20:00:00:e0:69:41:98:93

zone name Zone-HR vsan 2
  pwwn 50:00:00:20:37:6f:db:aa
```

After configuring zones, a server no longer has visibility to the storage devices. No

ports show as isolated. The zone set has been activated in the proper VSAN, but the show zoneset active command displays only the pWWN of the server HBA without its associated storage.

What is the probable cause of the storage not being visible?

- A. The storage pwwn 20:00:00:e0:69:41:a0:12 was not added to zone-hr by mistake.
- B. The server pwwn 20:00:00:e0:69:41:a0:12 was not added to zone-hr by mistake.
- C. A zone name was incorrectly typed as Zone-HR in VSAN 2 and added to ZoneSet1 therefore creating a separate zone containing pwwn 50:00:00:20:37:6f:db:aa.
- D. The server 50:00:00:20:37:6f:db:aa was administratively added to Zone-HR in vsan 2 by mistake.

Answer: C

QUESTION 68:

Certkiller .com is having performance problems in their SAN. The customer has multiple physical fabrics and would like to track and compare the device read-write I/O and LUN use for the last seven days.

Which group of MDS 9000 tools should the customer acquire and configure?

- A. Cisco Fabric Manager, Cisco Performance Manager, Cisco Traffic Analyzer
- B. Cisco Fabric Manager Server and Fabric Manager Server License, Cisco Performance Manager, Cisco Traffic Analyzer, PAA
- C. Cisco Fabric Manager, Cisco Performance Manager, Cisco Traffic Analyzer, PAA
- D. Cisco Fabric Manager Server, Cisco Performance Manager, Cisco Protocol Analyzer, PAA

Answer: B

QUESTION 69:

The MDS 9000 family switches use what three technologies to protect against unauthorized management access? (Choose three.)

- A. SNMPv3
- B. SSH
- C. RBAC
- D. RMON
- E. SES
- F. WEBM

Answer: A,B,C

QUESTION 70:

DRAG DROP

You work as a network administrator at the Boston office of Certkiller .com. Your boss Miss Certkiller, wants to standardize the process the SAN team follows when troubleshooting the SAN. Jack wants to leverage the tools provided by Fabric Manager so that each member of the team executes the same steps when faces with a problem in the SAN. Match the FM troubleshooting tool with the purpose it serves in the repair strategy.

You are not forced to use all available options.

FM Troubleshooting tools, Select from these

End-to-End Connectivity	Zone Mege
Fabric Configuration	Ludacris Tool
Device Manager	Switch Health

Description	FM Troubleshooting tools , place here
Compare the current configuration of a switch to that of another specified switch.	Place here
Determine any problems that affect that components of a specific switch .	Place here
Determine connectivity and routes among device4s with the switch fabric.	Place here
Determine if two connected switches have compatible zone configurations.	Place here

Answer:

FM Troubleshooting tools, Select from these

Device Manager	Ludacris Tool
----------------	---------------

Description	FM Troubleshooting Tool , place here
Compare the current configuration of a switch to that of another specified switch.	Fabric Configuration
Determine any problems that affect that components of a specific switch .	Switch Health
Determine connectivity and routes among device4s with the switch fabric.	End-to-End Connectivity
Determine if two connected switches have compatible zone configurations.	Zone Mege

QUESTION 71:

Using the Cisco Fabric Analyzer, which expression will capture and decode the data traffic in a particular VSAN?

- A. switch(config)# fcanalyzer local brief display-filter(mdshdr.vsan==0x01)&&((fc.d=="ff.ff.fe"\\|fc.s_id=="ff.ff.fe\"))
- B. switch(config)#fcanalyzer local brief display-filter mdshdr.vsan==0x03e7
- C. switch(config)#fcanalyzer local vsan 10
- D. Fabric Analyzer does not capture and decode data traffic.

Answer: D

QUESTION 72:

Given a fabric with three different switch vendors, which interop mode must a VSAN be in to interoperate with the other vendor switches?

- A. native mode
- B. interop mode 1
- C. interop mode 2
- D. interop mode 3

Answer: B

QUESTION 73:

Before Call Home can be enabled, which four parameters must be configured? (Choose four.)

- A. street address
- B. contact person's phone number
- C. contact person's name (sysContact)
- D. interop mode
- E. contact person's e-mail address
- F. syslog server address

Answer: A,B,C,E

QUESTION 74:

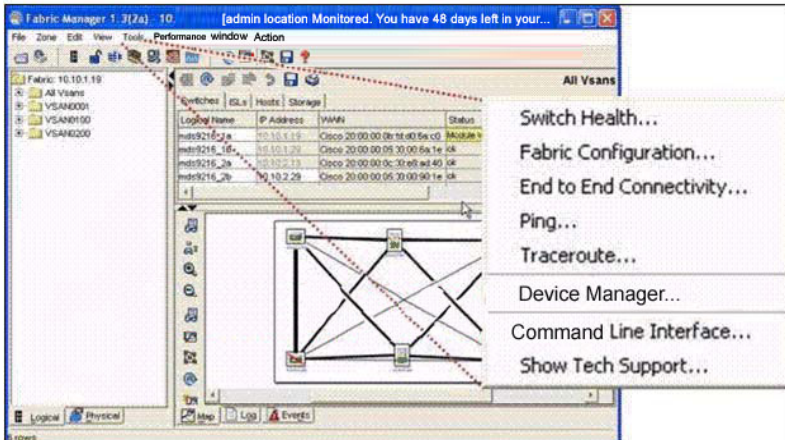
While attempting to add a new Fibre Channel device to port fc7/31, the link fails to initialize. Entering the command show interface fc7/31 returns the following output: fc7/31 is down (Fcot not present). What is the best troubleshooting choice?

- A. Verify optical fiber matched with laser type (ex. multimode fiber for shortwave laser and single mode fiber for longwave laser).
- B. Verify switch port type is valid for device type.
- C. Verify SFP functionality by reseating or replacing.
- D. Verify optical fiber continuity with an optical tester.
- E. Verify speed configuration on the switch port.

Answer: C

QUESTION 75:

Exhibit:



Which option from the Tools menu in the above exhibit would you select to verify connectivity and latency to a Fibre Channel end device?

- A. Switch Health
- B. Fabric Configuration
- C. End to End Connectivity
- D. Ping
- E. Traceroute

Answer: D

QUESTION 76:

Which three command options does Call Home support? (Choose three.)

- A. XML-destination
- B. HTML-destination
- C. short-txt-destination
- D. full-txt-destination

Answer: A,C,D

QUESTION 77:

Exhibit:

Interface	Description	VSAN(s)	Mode	Connected To	Speed (G)	Rx	Tx	Errors	Discards	Log
channel2	fc2/1-fc2/2	1,100,200	TE	10.10.1.19	4	0	0	0	0	
channel4	fc2/3-fc2/4	1,100,200	TE	10.10.1.29	4	0	0	0	0	
channel6	fc2/5-fc2/6	1,100,200	TE	10.10.2.19	4	0	0	0	0	
channel8	fc2/7-fc2/8	1,100,200	TE	10.10.2.29	4	0	0	0	0	
fc3/24	200	F		0x660200, ADIC 20:01:00:80:45:17:0f:80	2	0	0	0	0	
fc3/1	100	FL		0x760045, Seagate 22:00:00:20:37:15:a2	1	0	0	0	0	
fc3/17	200	FL		0x760045, Seagate 22:00:00:20:37:15:a2	1	0	0	0	0	

Which three statements can you derive from the Summary View in Device Manager? (Choose three.)

- A. Interface fc3/17 is connected to a loop device.
- B. Ports 3 and 4 belong to PortChannel 4 and are connected to ports on switch 10.10.1.29.
- C. The 10.10.2.19 switch is the local switch.
- D. Ports 1 and 2 belong to PortChannel 2 and are connected to ports on switch 10.10.2.19.
- E. This is a Cisco MDS 9216 switch.
- F. Check the Host 2, Host 3 and Host 4 can communicate with S1

Answer: A,B,D

QUESTION 78:

DRAG DROP

As one of the network technicians at Certkiller .com you are required to match the troubleshooting commands with a corresponding issue the command is intended to address.

You are not forced to use all options.

Troubleshooting Commands, Select from these

Certkiller# show fspf vsan 1	Certkiller# show fspf database vsan 1
Certkiller# show fcroute multicast vsan1	Certkiller# show fcroute unicast vsan 1
Certkiller# show fspf route	Certkiller# show fcroute summary vsan 1

Description	Troubleshooting Commands, place here
Determine the LSR details for each domain in the specified VSAN	Place here
Display the one-to-many routing information for the specified VSAN	Place here
Verify the unicast and multicast routing information for the specified VSAN	Place here
Verify that FC routing is enabled for the specified VSAN	Place here

Answer:

Troubleshooting Commands, Select from these

	Certkiller # show fcroute unicast vsan 1
Certkiller # show fspf route	
Description	Troubleshooting Commands, place here
Determine the LSR details for each domain in the specified VSAN	Certkiller # show fspf database vsan 1
Display the one-to-many routing information for the specified VSAN	Certkiller # show fcroute multicast vsan 1
Verify the unicast and multicast routing information for the specified VSAN	Certkiller # show fcroute summary vsan 1
Verify that FC routing is enabled for the specified VSAN	Certkiller # show fspf vsan 1

QUESTION 79:

While attempting to merge two fabrics together with an E_port connection, the ISL fails to initialize. Entering show interface fc2/14 returns the following: fc2/14 is down (Isolation due to ELP failure). What are two valid troubleshooting strategies? (Choose two.)

- A. Use show fctimer command to verify correct timer settings on each fabric.
- B. Verify Rxbuffer size match on both ends of ISL.
- C. Check domain IDs on each side of ISL to ensure they are unique.
- D. Check domain IDs on each side of ISL to ensure they are unique.
- E. Use Fabric Manager to verify active zone set is identical on both switches.

Answer: A,B

QUESTION 80:

An administrator finds the following lines in the running configuration file:
interface vsan1
ip address 10.10.10.3 255.255.255.0
no shut

- A. the IP address on the management port, placing it in VSAN 1
- B. a management VSAN on the switch
- C. a common IP address to be shared by all GigE ports in VSAN 1
- D. a default gateway for VSAN 1

Answer: B

QUESTION 81:

When configuring FCIP, packet fragmentation should be avoided in order to achieve optimal throughput. Fragmentation can be avoided by knowing which of the following?

- A. MTU of the source IP interface
- B. largest MTU in the path
- C. smallest MTU in the path
- D. MTU of the destination IP interface

Answer: C

QUESTION 82:

Certkiller .com has just replaced their third-party storage switches with Cisco MDS switches. They have noticed that the HP-UX hosts on their network lose connectivity to storage whenever their switches are rebooted. Which Cisco MDS feature will solve this problem?

- A. FCID persistence
- B. entire area FCID allocation
- C. VSANs
- D. LUN mapping

Answer: A

QUESTION 83:

What two commands must be executed on an MDS 9000 family switch in order to change a dynamically assigned Domain ID 5 to a static Domain ID 10 for VSAN 10? Choose two.

- A. switch(config-if)# shut fcdomain 5
- B. switch(config-if)# no shut fcdomain 10
- C. switch(config-if)# no shut fcdomain 10
- D. switch(config)# fcdomain domain 10 static vsan 10
- E. switch(config)# fcdomain restart vsan 10
- F. switch(config)# fcdomain restart disruptive vsan 10

Answer: D,F

QUESTION 84:

DRAG DROP

Your Certkiller trainee Sandra asks you to match the definitions with the appropriate Switch Interoperability statement. You must comply.

Statements, Select from these

Statements, Select from these

Name for a restrictive PID format, with allocation of one nibble of the FCI/PID in area field 0x0#F for port numbers

Enables MDS 9000 switches to interoperate with other switches that use a restrictive PID format that permits only 256 devices per dmain

Need not be the same on all switches within a heterogeneous fabric

Enables Cisco MDS 9000 switches to nteroperate with other switches that use a restrictive PID format that permits only 16 devices per domain

Allows the Cisco MDS 9000 to communicate over a standard set of protocols

Switch Interoperability

Core PID 0

FSPF load balancing schemes

Interop Mode 1

Interop Mode 2

Interop Mode 3

Statements, place here

Place here

Place here

Place here

Place here

Place here

Answer:

Switch Interoperability

Core PID 0

FSPF load balancing schemes

Interop Mode 1

Interop Mode 2

Interop Mode 3

Statements, place here

Name for a restrictive PID format, with allocation of one nibble of the FCI/PID in area field 0x0#F for port numbers

Need not be the same on all switches within a heterogeneous fabric

Allows the Cisco MDS 9000 to communicate over a standard set of protocols

Enables Cisco MDS 9000 switches to nteroperate with other switches that use a restrictive PID format that permits only 16 devices per domain

Enables MDS 9000 switches to interoperate with other switches that use a restrictive PID format that permits only 256 devices per dmain

QUESTION 85:

Exhibit:

```
Certkiller# show interface fc1/11
fc1/11 is up
Hardware is Fibre Channel
Port WWN is 20:0b:00:05:30:00:59:de
Admin port mode is ST
Port mode is ST
Port vsan is 1
Speed is 1 Gbps
Rspan tunnel is fc-tunnel 100
Beacon is turned off
5 minutes input rate 248 bits/sec, 31 bytes/sec, 0 frames/sec
5 minutes output rate 176 bits/sec, 22 bytes/sec, 0 frames/sec
6862 frames input, 444232 bytes
0 discards, 0 errors
0 CRC, 0 unknown class
0 too long, 0 too short
6862 frames output, 307072 bytes
0 discards, 0 errors
0 input OLS, 0 LRR, 0 NOS, 0 loop inits
0 output OLS, 0 LRR, 0 NOS, 0 loop inits
16 receive B2B credit remaining
3 transmit B2B credit remaining
```

In the output of the show interface command, which two statements are correct?
(Choose two.)

- A. This is a Fibre Channel port running at 2 Gbps.
- B. This port cannot be attached to any device.
- C. This port is in slot 11 in the switch.
- D. This port is in multiple VSANs.
- E. This port mode is specific to MDS 9000 switches.

Answer: B,E

QUESTION 86:

What protocol does Cisco Fabric Manager use to provide continuous health and event monitoring for the Cisco MDS 9000 family of switches?

- A. SNMP
- B. WEBM
- C. SES
- D. SMI-S

Answer: A

QUESTION 87:

Which two of these features are characteristic of out-of-band management for the Cisco MDS 9000 Series switches? (Choose two.)

- A. CUP management of the switch for FICON
- B. 10/100 Ethernet connection
- C. IPFC
- D. FCIP
- E. logical interface VSAN 1
- F. configuration during the initial switch setup

Answer: B,F

QUESTION 88:

Certkiller .com would like to implement a low-cost traffic engineering solution that provides a primary data path, and a secondary data path that will only be used in the event of a failure in the primary path. Which of these solutions best meets the customer needs?

- A. VSAN allowed list pruning
- B. FCC
- C. QoS
- D. FSPF link costs

Answer: D

QUESTION 89:

If FCIP encryption and compression are both required, which of these sets of statements is true?

- A. The sender should compress the data and then encrypt it. The receiver should decrypt the data and then uncompress it.
- B. The sender should compress the data and then encrypt it. The receiver should uncompress the data and then decrypt it.
- C. The sender should encrypt the data and then compress it. The receiver should uncompress the data and then decrypt it.
- D. The sender should encrypt the data and then compress it. The receiver should decrypt the data and then uncompress it.

Answer: A

QUESTION 90:

Which two commands will display the control traffic output from Cisco Fabric Analyzer in a particular VSAN? (Choose two.)

- A. switch(config)#fcanalyzer local brief

```
display-filter(mdshdr.vsan==0x01)&&((fc.d_id=="ff.ff.fe"\\|fc.s_is=="ffcffcfe"))
```

B. switch(config)#fcanalyzer local brief display-filter mdshdr.vsan==0x03e7

C. switch(config)#fcanalyzer local brief

D. switch#show fcs ie vsan 999

E. switch(config)fcanalyzer local limit brief

Answer: A,B

QUESTION 91:

DRAG DROP

As a network administrator at Certkiller .com you are required to match the features with the required license.

Statements, Select from these

Features, Select from these

ISCSI	FC SP	FICON	FCIP
-------	-------	-------	------

Required License

Enterprise Package license
Mainframe Package license
SAN Extension Over IP Package license
Standard Package (no license required)

Features, Place here

Place here
Place here
Place here
Place here

Answer:

Required License	Features, Place here
Enterprise Package license	FC-SP
Mainframe Package license	FICON
SAN Extension Over IP Package license	FCIP
Standard Package (no license required)	iSCSI

QUESTION 92:

Which three of these scenarios allow Write Acceleration configuration? (Choose three.)

A. using the Cisco MDS 9216i switch with the standard package license

B. using the Cisco MDS 9216i with an FCIP port as part of a PortChannel (SAN-OS)

Release 2.0)

- C. using a Cisco MDS switch with an FCIP interface in a FICON VSAN
- D. using the Cisco MDS 9120 switch with the standard package license for Fibre Channel Write Acceleration
- E. using an SSM in an FCIP configuration with the initiator and target devices directly attached
- F. using the Cisco MDS 9120 switch with the SAN extension license for FCIP Write Acceleration

Answer: A,B,E

QUESTION 93:

Which two of these commands display the full zone database on the local switch?
(Choose two.)

- A. show zone active
- B. show zoneset active
- C. show zone
- D. show zoneset
- E. show active zoneset

Answer: C,D

QUESTION 94:

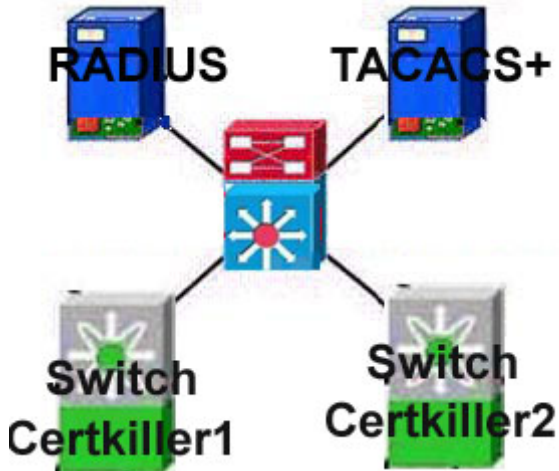
Choose the correct list of tasks to configure Remote Spanning.

- A. Create a VSAN interface. Enable a Fibre Channel tunnel. Initiate the Fibre Channel tunnel. Configure the ST_Port in the source switch. Configure the SD_Port in the destination switch. Configure a SPAN session in the source switch.
- B. Create a VSAN interface. Enable a Fibre Channel tunnel. Initiate the Fibre Channel tunnel. Configure the ST_Port in the source switch. Configure the SD_Port in the destination switch. Configure an RSPAN session in the source switch.
- C. Create an RSPAN interface. Enable a Fibre Channel tunnel. Initiate the Fibre Channel tunnel. Configure the SD_Port in the destination switch. Configure the ST_Port in the source switch. Configure an RSPAN session in the source switch.
- D. Create a VSAN interface. Enable a Fibre Channel tunnel. Initiate the Fibre Channel tunnel. Configure the ST_Port in the destination switch. Configure the SD_Port in the source switch. Configure an RSPAN session in the source switch.

Answer: B

QUESTION 95:

Exhibit:



Certkiller 1 is configured to use the RADIUS server for authentication. Certkiller 2 is configured to use Certkiller 2 for authentication. Neither switch is configured to use local authentication. What will happen if neither AAA server is reachable?

- A. Both Certkiller 1 and Certkiller 2 will attempt local authentication.
- B. Certkiller 1 will try to authenticate locally, Certkiller 2 will not attempt local authentication.
- C. Certkiller 1 will not try to authenticate locally, Certkiller 2 will attempt local authentication.
- D. Neither switch will attempt local authentication.

Answer: A

QUESTION 96:

Fabric merge failures are typically caused by which three configuration errors?
(Choose three.)

- A. unique domain IDs
- B. VSAN missing from one switch
- C. incompatibility in the active zone databases
- D. connecting ports incorrectly configured as TE
- E. incorrect VSAN allow list on ISL
- F. preferred domain IDs

Answer: B,C,E

QUESTION 97:

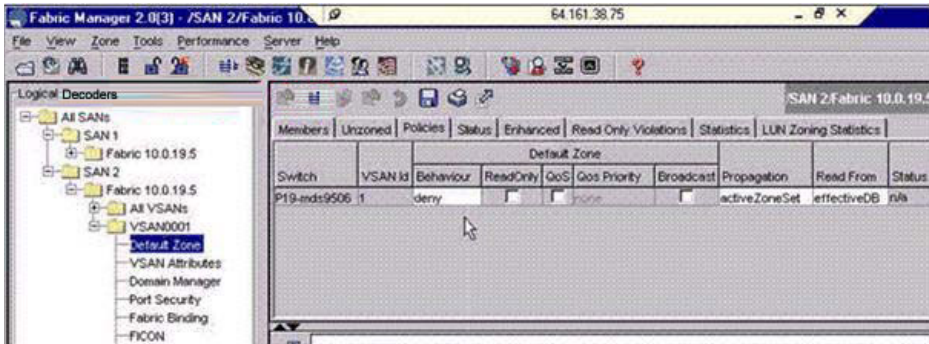
You are attempting to connect a new host to the fabric, but the Fx port fails to initialize. Entering the command `show interface fc7/31` returns the following: `fc7/31 is down (Link_Failure or not connected)`. What are three valid troubleshooting strategies? (Choose three.)

- A. verify FCOT is present
- B. use show fctimer command to verify fabric timer values
- C. verify MDS switchport speed
- D. verify physical fiber connections
- E. verify the switch port type is not set for E
- F. use Fabric Analyzer to verify FLOGI from E_port

Answer: A,C,D

QUESTION 98:

Exhibit:



Given the Cisco Fabric Manager output, which of these problems might occur if no zoning is configured?

- A. There will be VSAN isolation on EISLs.
- B. Zone merges with other MDS switches will fail.
- C. Device security enforced by switch zoning will not occur.
- D. No end devices will be able to communicate.

Answer: D

QUESTION 99:

Which of these utilities provides the ability to configure and manage zones on a Cisco MDS switch?

- A. Cisco Fabric Manager
- B. Cisco Device Manager
- C. Cisco Performance Manager
- D. Cisco Traffic Analyzer

Answer: A

QUESTION 100:

Which four statistics can be generated with the Traffic Analyzer? (Choose four.)

- A. CPU load statistics
- B. overall network statistics
- C. session-based statistics
- D. N_Port-based statistics
- E. VSAN-based statistics
- F. FC framing errors ASIC utilization statistics

Answer: B,C,D,E

QUESTION 101:

Certkiller .com has purchased the MDS 9216i with an IPS module. The IPS module is used for FCIP connectivity.

Which of these licenses will the customer need to purchase?

- A. Standard Package
- B. Enterprise Package with additional SAN extension over IP Package
- C. SAN Extension over IP Package
- D. 2 SAN Extension over IP Packages

Answer: C

QUESTION 102:

Which of these is an appropriate use for the SAN extension tuner?

- A. determine the average number of I/Os in an active FCIP tunnel
- B. determine the number of outstanding I/Os currently used in an active FCIP tunnel
- C. determine the number of outstanding I/Os needed to maximize FCIP throughput
- D. report the maximum size of packets for optimized FCIP tunnels
- E. automatically adjust FCIP parameters to improve tunnel performance

Answer: C

QUESTION 103:

Certkiller .com has reported performance degradation in the SAN. The system administrator would like to track read-write I/O and LUN use on several devices. The devices are directly connected to various switches and belong to different VSANs. The administrator wants to gather information for the last 72 hours. Which MDS 9000 tools should the administrator acquire and configure?

- A. Fabric Manager, Performance Manager, Cisco Traffic Analyzer, PAA, Fabric Manger Web Services

- B. Fabric Manager, Fabric Manager Server License, Fabric Manager Web Services, Performance Manager, Cisco Traffic Analyzer, PAA
- C. Fabric Manager, Performance Manager, Cisco Traffic Analyzer, PAA
- D. Fabric Manager Server, Performance Manager, Cisco Protocol Analyzer, PAA

Answer: B

QUESTION 104:

What features can be enabled to remotely monitor an MDS fabric?

- A. Syslog
- B. SNMP
- C. Port Analyzer Adapter
- D. Radius
- E. Call Home

Answer: A,B,E

QUESTION 105:

Which of these applications would be better suited for SAN rather than NAS deployment?

- A. source code control system
- B. database
- C. office productivity suite
- D. e-mail

Answer: B

QUESTION 106:

Exhibit:

```
CertkillerA (config)# role name CertkillerGroup
CertkillerA (config-role)# rule 1 deny config feature fspf
CertkillerA (config-role)# rule 2 permit config
```

Which of the following statements is true?

- A. All users belonging to the Certkiller Group role are allowed to perform all configuration commands except fspf commands because the deny config feature fspf is listed first.
- B. All users are allowed to perform all configuration commands because the permit config command is listed last and that will globally override all other rules.
- C. All users belonging to the Certkiller Group role to perform all configuration commands except fspf commands because it does not matter what order the rules are entered.

D. The configuration is not valid because rules are entered at the switch (config-role-vsan)# level.

Answer: B

QUESTION 107:

Which two security protocols are supported in the Cisco iSCSI implementation? (Choose two.)

- A. IPSec
- B. FC-SP
- C. SLAP
- D. CHAP
- E. PAP

Answer: A,D

QUESTION 108:

The HBA on your storage server only supports the NL FC mode. Which interface type on the MDS 9000 Series fabric switches can support this HBA?

- A. SD
- B. TE
- C. FL
- D. N
- E. ST

Answer: C

QUESTION 109:

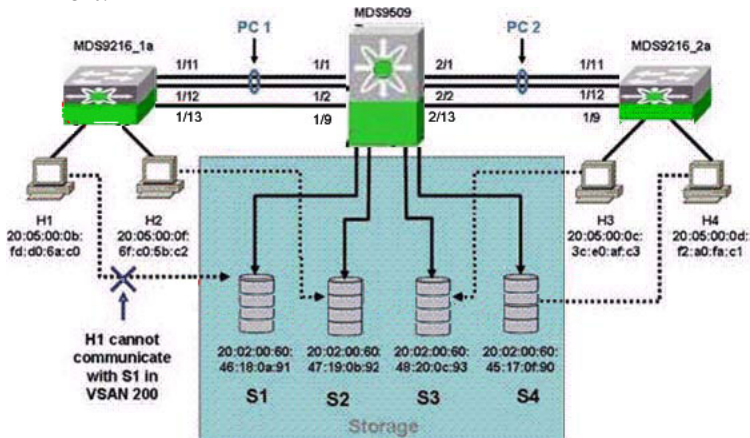
Which three commands will display the members of a particular zone or zones? (Choose three.)

- A. switch# show zone vsan 1
- B. switch# show zone member pwwn 21:00:00:20:37:9c:48:e5
- C. switch# show zoneset vsan 1
- D. switch# show zone name Zone1
- E. switch# show zone statistics
- F. switch# show zone membership

Answer: A,C,D

QUESTION 110:

Exhibit:



Host H1 cannot communicate with Storage S1 in VSAN 200, but Host H4 can communicate with Storage S4. Which three of these configurations or connections should you verify? (Choose three.)

- A. The administrative state of the Host H1 interface on Cisco MDS 9216_1a is Active
- B. The VSAN 200 membership includes Host H1 pWWN 20:06:00:0b:fd:60:6a:c0 and Storage S1 pWWN 20:02:00:60:46:18:0a:91.
- C. TE on links between both Cisco MDS 9216 switches and the Cisco MDS 9509 allow VSAN 200.
- D. The FSPF costs on Port Channel 1 and Port Channel 2 are equal.
- E. Check cabling between Host H1 and Storage S1.
- F. The link cost for PC1

Answer: A,B,E

QUESTION 111:

A proposed SAN design does not give the customer enough throughput between Cisco switches. The customer is familiar with the concept of aggregating links, therefore the Cisco SAN engineer proposes configuring PortChannels. What is the maximum number of interfaces that can be configured into a PortChannel per switch (x) and the maximum number of PortChannels per switch (y) supported by the Cisco MDS 9000 Family of switches?

- A. x=16, y=112
- B. x=10, y=256
- C. x=8, y=128
- D. x=2, y=32

Answer: A

QUESTION 112:

Certkiller .com with multiple vendor switches establishes an ISL between a non-Cisco switch and an E_Port on a Cisco MDS 9000 switch.

Which three statements are true about the interop behavior between the two switches? (Choose three.)

- A. Exchange-based load balancing is supported in all interop modes.
- B. Interop mode affects all VSANs.
- C. Only E_Ports can be used to connect to non-Cisco MDS switches.
- D. The non-Cisco switch must have matching FC timers with the VSAN containing the E_Port on the Cisco MDS 9000 Series switch.
- E. Adding another ISL between the switches will allow a PortChannel to be configured for HA.
- F. Interop mode 1 allows full featured communication between all combinations of MDS and non-MDS switches

Answer: A,C,D

QUESTION 113:

You have set up a session to the SD port to enable the investigation of a problem on a particular FC port. You need to check whether this has been correctly set up for the desired port. What command should you use?

- A. show span session
- B. show ssh
- C. show tport
- D. show fcanalyzer

Answer: A

QUESTION 114:

A Fibre Channel Analyzer is capturing ingress traffic from a server HB

A. The HBA

is connected to interface fc3/1 on a local switch (S1). The Fibre Channel Analyzer is connected to a port on a remote switch (S2).

Which interface type on switch S2 allows the Fiber Channel Analyzer to connect and receive the RSPAN traffic?

- A. SD_Port
- B. SE_Port
- C. ST_Port
- D. TE_Port

Answer: A

QUESTION 115:

The MDS 9000 family switches use what three technologies to protect against unauthorized management access? (Choose three.)

- A. SNMPv3
- B. SSH
- C. RBAC
- D. RMON
- E. SES
- F. WEBM

Answer: A,B,C

QUESTION 116:

Which three of these terms are valid Fibre Channel topologies? (Choose three.)

- A. point-to-point
- B. switched backbone
- C. Gigabit Ethernet
- D. arbitrated loop
- E. switched fabric
- F. autonomous region

Answer: A,D,E

QUESTION 117:

In order to allow access to a switch using Telnet, which three settings should be configured during the initial setup of a Cisco 9000 Series switch using SAN-OS Release 2.0? (Choose three.)

- A. assign an admin password
- B. accept auto for the switchport trunk mode
- C. configure the IP address for the VSAN 1 interface
- D. configure the netmask for the IP address
- E. configure the IP address for the Mgmt0 interface
- F. Configure SSH with an RSA1 key

Answer: A,D,E

QUESTION 118:

When creating an Inter-VSAN routing topology, which type of World Wide Name (WWN) must be used?

- A. Port WWN
- B. Switch WWN
- C. Fabric Port WWN
- D. VSAN WWN

Answer: B

QUESTION 119:

DRAG DROP

You are giving a lecture for the network administrators at Certkiller .com. You need to match the proper compression modes with the bandwidths.

Statements, Select from these

Compression mode, Select from these

auto	mode1	mode2	mode3
------	-------	-------	-------

Bandwidth

Default mode picks the appropriate compression scheme based on the bandwidth of the link configured in the TCP parameters in the FCIP profile.	Place here
A fast-compression mode for high bandwidth links (greater than 25 Mbps)	Place here
A high-compression mode for low-bandwidth links (less than 10 Mbps)	Place here
A moderate compression mode for moderately low bandwidth links (between 10 and 25Mbps)	Place here

Compression mode, Place here

Answer:

Bandwidth	Compression mode, Place here
Default mode picks the appropriate compression scheme based on the bandwidth of the link configured in the TCP parameters in the FCIP profile.	auto
A fast-compression mode for high bandwidth links (greater than 25 Mbps)	mode1
A high-compression mode for low-bandwidth links (less than 10 Mbps)	mode3
A moderate compression mode for moderately low bandwidth links (between 10 and 25Mbps)	mode2

QUESTION 120:

DRAG DROP

As a network technician at Certkiller .com you are required to match the items with the appropriate security description.

Statements, Select from these

Items, Select from these

Fabric Security	Port Security	Network Security
Switch Access Security	User Authentication	Role-based Access

Description

Users FC-SP to provide switch-switch and host-switch authentication	Place here
User AAA strategy to verify identify of, gran access, and track teh actions of remote users	Place here
Secures switch access through the CLI or SNMP	Place here
Prevents unauthorized access to a switch port	Place here
Uses IPSec for confidentiality, integrity, and authentication between participating peers	Place here
Limits access to the switch by assigning roles or groups to users	Place here

Items, Place here

Answer:

Description	Items, Place here
Users FC-SP to provide switch-switch and host-switch authentication	Fabric Security
User AAA strategy to verify identify of, gran access, and track teh actions of remote users	User Authentication
Secures switch access through the CLI or SNMP	Switch Access Security
Prevents unauthorized access to a switch port	Port Security
Uses IPSec for confidentiality, integrity, and authentication between participating peers	Network Security
Limits access to the switch by assigning roles or groups to users	Role-based Access

QUESTION 121:

What is the proper command to check the membership of all VSANs configured on an MDS Series switch?

- A. show vsan
- B. show vsan usage
- C. show members vsan all
- D. show vsan membership

Answer: D

QUESTION 122:

Exhibit:

Certkiller # show environment power						
Mod	Model	Power Req (Watts)	Power Req (Amp @42V)	Power Req (Watts)	Power All (Amp @42V)	Status
1	DS-X9032	199.92	4.76	199.92	4.76	powered-up
4	DS-X9032	199.92	4.76	199.92	4.76	powered-up
5	DS-X9530	126.00	3.00	126.00	3.00	powered-up
6	DS-X9530	126.00	3.00	126.00	3.00	powered-up
9	DS-X9016	220.08	5.24	220.08	5.24	powered-up

The show environment power command displays the output shown in the exhibit. Given PS 1 (Power Supply 1, 1000 watts) and PS 2 (Power Supply 2, 1200 watts), which mode and power supply will satisfy the power needs of the Cisco MDS 9509?

- A. combined, PS 1
- B. redundant, PS 2
- C. redundant, PS 1 and PS 2
- D. redundant, PS 1

Answer: D

QUESTION 123:

DRAG DROP

As a network technician at Certkiller .com you are required to match the Fibre Channel Topology with the appropriate technology type.

Fibre Channel Topology, Select from these

- Uses WWN to assign FCIDs
- Shares bandwidth with up to 126 nodes
- Supports multiple simultaneous communication connections

Topology type

- Arbitrated loop
- Point-to-point loop
- Switched fabric

Fibre Channel Topology, Place here

- Place here
- Place here
- Place here

Answer:

Topology type	Fibre type
Arbitrated loop	Supports multiple simultaneous communication connections
Point-to-point	Uses WWN to assign FCIDs
Switched fabric	Shares bandwidth with up to 126 nodes

QUESTION 124:

DRAG DROP

As a network technician at Certkiller .com you are required to match the Cisco Tool with the appropriate function.

Cisco Tool, Select from these

Device Manager	Fabric Manager
Performance Manager	Traffic Analyzer

Function	Cisco Tool, Place here
Gathers network device statistics historically and provides this information graphically using a web browser	Place here
Monitors multiple physical fabrics under the same user interface	Place here
Provides access to statistics and configuration information for a single switch	Place here
Provides real-time analysis of SPAN traffic or analysis of captured traffic through a web browser user interface	Place here

Answer:

Function	Cisco Tool, Place here
Gathers network device statistics historically and provides this information graphically using a web browser	Device Manager
Monitors multiple physical fabrics under the same user interface	Fabric Manager
Provides access to statistics and configuration information for a single switch	Performance Manager
Provides real-time analysis of SPAN traffic or analysis of captured traffic through a web browser user interface	Traffic Analyzer

QUESTION 125:

Which three types of network statistics can be created with the Traffic Analyzer?
(Choose three.)

- A. per-LUN statistics
- B. total bandwidth used

- C. Tx/Rx bandwidth per VSAN
- D. Tx/Rx bandwidth per N_Port
- E. class-based traffic breakdown

Answer: B,C,D

QUESTION 126:

Inter-VSAN Routing is interoperable with other vendor switches as long as MDS switches are set to inter-op 1 mode. Where in the fabric can the other vendor switches reside for a successful implementation of Inter-VSAN Routing?

- A. core switches
- B. edge switches
- C. distribution switches
- D. remote site switches

Answer: B

QUESTION 127:

Which four protocols does the Traffic Analyzer support? (Choose four.)

- A. FC-SP
- B. SCSI
- C. extended link services
- D. SW_ILS
- E. FCIP
- F. GS-3

Answer: B,C,D,F

QUESTION 128:

Which three CLI commands can be used to view remaining buffer-to-buffer credits? (Choose three.)

- A. show interface fc x/y
- B. show interface fc x/y brief
- C. show interface fc x/y counters
- D. show interface fc x/y bbcredit
- E. show interface fc x/y flow-control

Answer: A,C,D

QUESTION 129:

What are four valid protocols for copying software to the MDS 9000 family switches? (Choose four.)

- A. Remote Copy Service
- B. Secure Copy Protocol
- C. Trivial File Transfer Protocol
- D. File Transfer Protocol
- E. Secure Trivial File Transfer Protocol
- F. Secure File Transfer Protocol

Answer: B,C,D,F

QUESTION 130:

For purposes of granting restricted access to statically configure iSCSI virtual targets, which three of these can be used to identify iSCSI initiators? (Choose three.)

- A. iSCSI name
- B. host name
- C. IP address
- D. MAC address
- E. IP subnet
- F. iSCSI WWN

Answer: A,C,E

QUESTION 131:

Exhibit:

```
Certkiller1 # ping
Target IP address: 10.0.2.2
Repeat count: 3
Datagram size: 2198
Timeout in seconds: 2
Extended commands (y/n) y
Source address or interface: 10.0.1.2
Type of service [0]
Set DF bit in IP header [n]
Data pattern hex: 161 1111
PATTERN: 0x1111
PING 10.0.2.2 (10.0.2.2): 2198 data bytes
---10.0.2.2 ping statistics ---
3 packets transmitted, 0 packets received, 100% packet loss
```

Certkiller .com has configured an FCIP connection between two sites. The customer issues an extended IP ping command to determine path availability, MTU, and round-trip time.

According to the output in the exhibit, which parameter in the extended ping needs adjustment in order to increase the chances of establishing end-to-end connectivity?

- A. timeout in seconds
- B. repeat count
- C. datagram size
- D. nothing, end-to-end connectivity cannot be established

Answer: C

QUESTION 132:

DRAG DROP

As a network technician at Certkiller .com you are required to match the items in which order they are accessed during the switch boot process.

Items, Select from these	Items, Place in order here
BIOS	Place first here
kickstart	Place second here
loader	Place third here
SAN-OS	Place fourth here
Startup Config	Place fifth here

Answer:

Items, Place in order here

BIOS
kickstart
SAN-OS
Startup Config
loader

QUESTION 133:

During a code upgrade on an MDS 9500 switch, the upgrade process failed on one of the supervisors because the current flash images could not be copied from the active to the standby supervisor. What possible workaround can the storage administrator

execute to correct this error?

- A. Add DRAM memory to both the active and standby supervisors.
- B. Reboot the switch, enter rommon mode, and manually push the original image to both supervisors.
- C. Delete unused files on second supervisor and repeat the install.
- D. Execute a show log command to check the syslog files for details on the error.

Answer: C

QUESTION 134:

What three steps must you complete before configuring Inter-VSAN Routing?
(Choose three.)

- A. Enable a routing protocol.
- B. Configure unique domain IDs across all VSANs and switches used in IVR operations.
- C. Configure IVR only on relevant border switches.
- D. Obtain an enterprise license package.
- E. Enable FSPF

Answer: B,C,D

QUESTION 135:

A host is unable to access the storage network after its HBA is replaced. Which of these switch configurations could be preventing access?

- A. port-based zoning
- B. port-mode security
- C. port security
- D. port VSAN membership

Answer: C

QUESTION 136:

Which troubleshooting tool uses RDL and helps isolate problem points across trunking-enabled EISL and ISL ports?

- A. SPAN
- B. FC Ping
- C. traceroute
- D. RMON

Answer: B

QUESTION 137:

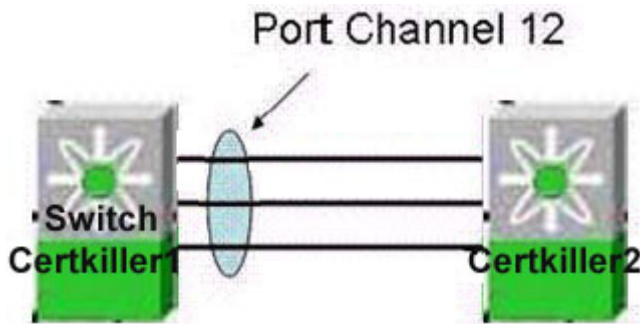
When connecting a Port Analyzer Adapter to an MDS 9000 family switch, the Fibre Channel port on the MDS side is configured as?

- A. TL_Port: Translative Loop Port
- B. TE_Port: Trunking E_Port
- C. SD_Port: SPAN destination port
- D. Fx_Port: operates in either F_Port or FL_Port mode

Answer: C

QUESTION 138:

Exhibit:



You suspect that one of the four VSANs in your fabric is segmented on PortChannel 12. Which of the following commands will show the link isolation?

- A. show cfs
- B. show vsan membership
- C. show interface brief
- D. show interface port-channel 12

Answer: D

QUESTION 139:

Which three characteristics does an SD port have? (Choose three.)

- A. It ignores buffer-to-buffer credits.
- B. It allows data traffic in the egress (tx) and ingress (rx) directions.
- C. It does not require a device or an analyzer to be physically connected.
- D. Port mode cannot be changed if it is being used for a SPAN session.

Answer: A,C,D

QUESTION 140:

You have been asked to configure a Cisco MDS switch (Switch 4) and add it to an existing MDS network, connecting directly into Switch 3. Your new switch will be joining a production network running mission-critical applications, so you have been asked to make sure that there are no network disruptions and that the new switch joins the existing fabric without any segmentation issues.

Which three of these steps should you perform? (Choose three.)

- A. View the existing domain IDs and statically assign a unique domain ID to your switch
- B. Run the Zone Merge utility to ensure that no zone merge conflicts will isolate the link.
- C. Enable Cisco Fabric Services, because this set of features prevents link isolation.
- D. Turn on RCF reject on Switch 4.
- E. Disable FC domain auto-reconfigure on Switch 3.
- F. Ensure that src-id/dst-id/oxid FSPF load balancing is configured.

Answer: A,B,E

QUESTION 141:

A role to permit operations in multiple VSANs has been created for a VSAN administrator.

Which of the following is correct?

- A. The VSAN administrator can change VSAN membership of F or FL ports among these VSANs.
- B. The VSAN administrator cannot change VSAN membership of F or FL ports among these VSANs.
- C. It does not matter what role or permissions have been configured for the administrator. Port membership cannot be changed without first removing the ports from the membership of the associated VSANs.
- D. It does not matter what role or permissions have been configured for the administrator. Any port type can be changed without removing the ports from the membership of the associated VSANs.

Answer: A

QUESTION 142:

Exhibit

```
switch (config)# role name sangroup
switch (config-role)# rule 1 deny config feature fspf
switch (config-role)# rule 2 permit config
```

Exhibit:

Which of the following statements is true?

- A. All users belonging to the sangroup role are allowed to perform all configuration commands except fspf commands because the deny config feature fspf is listed first.
- B. All users are allowed to perform all configuration commands because the permit config command is listed last and that will globally override all other rules.
- C. All users belonging to the sangroup role to perform all configuration commands except fspf commands because it does not matter what order the rules are entered.
- D. The configuration is not valid because rules are entered at the switch (config-role-vsan)# level.

Answer: B

QUESTION 143:

Exhibit



Exhibit:

In Device Manager, interfaces fc1/1 and fc1/2 are members of a port-channel. What is the meaning of the orange color on interfaces fc1/1 and fc1/2?

- A. Port-channel is down.
- B. Port-channel is up and receiving frame errors.
- C. Port-channel is up but not all members are fully active.
- D. Port-channel is administratively down.
- E. Port-channel is error-disabled.

Answer: C

QUESTION 144:

What two commands must be executed on an MDS 9000 family switch in order to change a dynamically assigned Domain ID 5 to a static Domain 10 for VSAN 10? (Choose two)

- A. switch(config-if)# shut fcdomain 5
- B. switch(config-if)# no shut fcdomain 10

- C. switch(config)# fcdomain domain 10
- D. switch(config)# fcdomain domain 10 static vsan 10
- E. switch(config)# fcdomain restart vsan 10
- F. switch(config)# fcdomain restart disruptive vsan 10

Answer: D, F

QUESTION 145:

When installing the Port Analyzer Adapter, how do you connect the Fibre Channel port to the MDS switch?

- A. single-mode fiber and SC to LC connector
- B. multimode fiber and LC to LC connector
- C. single-mode fiber and LC to LC connector
- D. multimode fiber and SC to LC connector

Answer: B

QUESTION 146:

What features can be enabled to remotely monitor an MDS fabric?

- A. Syslog
- B. SNMP
- C. Port Analyzer Adapter
- D. Radius
- E. Call Home

Answer:

QUESTION 147:

What are VSANs?

- A. VSANs are a logical segmentation of a physical fabric into arbitrated loop topologies.
- B. VSANs are physical segmentations in a logical switch fabric that allow customers to create separate SAN islands.
- C. VSANs are a logical segmentation of a physical infrastructure into logical fabrics that allow customers to create logical and independent fabrics.
- D. VSANs are physical boundaries between blades on the MDS.

Answer: C

QUESTION 148:

An MDS 9216 fails to boot because no valid kickstart image is included on the internal compact flash.

Which of the following plans will restore the switch to proper operation?

- A. Configure an IP address on VSAN 1 and use FTP to transfer a kickstart image to slot0.
- B. Configure an IP address in CMOS and use TFTP to transfer a kickstart image to slot0.
- C. Configure an IP address on mgmt0 and use FTP to transfer a kickstart image to slot0.
- D. Configure an IP address on mgmt0 and use TFTP to transfer a kickstart image to slot0.

Answer: B

QUESTION 149:

Which of the following statements correctly explains the function of the MDS 9000 command boot auto-copy?

- A. The command copies all files from the active supervisor bootflash: device to the backup supervisor bootflash: device.
- B. The command copies all configured boot variable referenced images from the active supervisor to the backup supervisor.
- C. The command copies only configured kickstart and system images from the active supervisor to the backup supervisor.
- D. The command copies configured boot variables from the active supervisor running configuration to the backup supervisor running configuration.

Answer: B

QUESTION 150:

Exhibit

```
switch# config t
switch(config)# int fc1/9 - 12
switch(config-if)# switchport speed 2000
switch(config-if)# switchport ingress-rate 10
switch(config-if)# no shut
```

Exhibit:

The configuration shown in the exhibit will result in which maximum ingress traffic on an MDS 9120 port fc1/9?

- A. 10MBps
- B. 14MBps
- C. 21MBps
- D. 42MBps
- E. 100MBps
- F. 200MBps

Answer: C

QUESTION 151:

DRAG DROP

Match the troubleshooting commands with a corresponding issue the command is intended to address. You not use all options.

- switch# show fspf route
- switch# show fspf vsan 1
- switch# show fcroute multicast vsan 1
- switch# show fspf database vsan 1
- switch# show fcroute unicast vsan 1
- switch# show fcroute summary vsan 1

- Verify that FC routing is enabled for the specified VSAN Place here
- Determine the LSR details for each domain in the specified VSAN Place here
- Verify the unicast and multicast routing information for the specified VSAN Place here
- Display the one-to-many routing information for the specified VSAN Place here

Answer:

switch# show fspf route

switch# show fcroute unicast vsan 1

- Verify that FC routing is enabled for the specified VSAN switch# show fspf vsan 1
- Determine the LSR details for each domain in the specified VSAN switch# show fspf database vsan 1
- Verify the unicast and multicast routing information for the specified VSAN switch# show fcroute summary vsan 1
- Display the one-to-many routing information for the specified VSAN switch# show fcroute multicast vsan 1

QUESTION 152:

The MDS 9000 family switched use what three technologies to protect against unauthorized management access? (Choose three)

- A. SNMPv3
- B. SSH
- C. RBAC
- D. RMON
- E. SES
- F. WEBM

Answer: A, B, C

QUESTION 153:

When creating an Inter-VSAN routing topology, which type of World Wide Name (WWN) must be used?

- A. Port WWN
- B. Switch WWN
- C. Fabric Port WWN
- D. VSAN WWN

Answer: B

QUESTION 154:

The Cisco Traffic Analyzer is required to gather historical data for what type of information?

- A. Class F traffic
- B. SCSI session data
- C. Class 2 errors
- D. FC framing errors

Answer: B

QUESTION 155:

During a code upgrade on an MDS 9500 switch, the upgrade process failed on one of the supervisors because the current flash images could not be copied from the active to the standby supervisor-

What possible workaround can the storage administrator execute to correct this error?

- A. Add DRAM memory to both the active and standby supervisors.
- B. Reboot the switch, enter rommon mode, and manually push the original image to both supervisors.
- C. Delete unused files on second supervisor and repeat the install.

D. Execute a show log command to check the syslog files for details on the error.

Answer: C

QUESTION 156:

The system administrator receives the following message: "Error disabled - Possible port channel misconfiguration".

What three things should the administrator verify in the PortChannel configuration? (Choose three)

- A. Each switch on either side of the PortChannel is connected to the same number of interfaces.
- B. There are no more than 32 links aggregated together to form the PortChannel.
- C. The ports on the switch configured in the PortChannel are on the same switching module.
- D. Each ISL interface belongs to the same VSAN.
- E. Links in the PortChannel were not changed after the PortChannel was configured.

Answer: A, D, E

QUESTION 157:

Which tool is used to diagnose protocol errors, credit starvation, and malformed or nonstandard complaint frames or primitives on a Fibre Channel network?

- A. Port Analyzer Adapter
- B. Fabric Analyzer
- C. External Fibre Channel Protocol Analyzer
- D. Fabric Manager

Answer: C

QUESTION 158:

Which four statistics can be generated with the Traffic Analyzer? (Choose four)

- A. CPU load statistics.
- B. Overall network statistics.
- C. Session-based statistics.
- D. N_Port-based statistics.
- E. VSAN-based statistics.
- F. FC framing errors ASIC utilization statistics.

Answer: B, C, D, E

QUESTION 159:

Which two statements about the License Manager are true? (Choose two)

- A. License Manager invoked via Device Manager displays license information for all MDS switched in the fabric.
- B. License Manager invoked via Fabric Manager displays license information for the highlighted MDS switch on the topology map.
- C. License Manager invoked via Fabric Manager displays license information for all MDS switched in the fabric.
- D. License Manager invoked via Fabric Manager displays license information only for MDS switched that are members of the VSAN currently selected on the Navigation Tree.
- E. License Manager is accessed via the standalone License Manager Server.
- F. License Manager invoked via Device Manager displays license information local to the MDS switch.

Answer: C, F

Confirmed by logging on to our Fabric which contains multiple MDS switches

QUESTION 160:

When interop mode is being used, which three features may need to be changed on the MDS 9000 switch? (Choose three)

- A. R_T_TOV
- B. Default Zone
- C. FSPF
- D. F_S_TOV
- E. Zoning attributes
- F. TE Ports to other MDS switched

Answer: B, D, E

QUESTION 161:

While attempting to merge two fabrics together with an E_port connection, the ISL fails to initialize. Entering show interface fc1/14 returns the following: fc2/14 is down (Isolation due to ELP failure).

What are two valid troubleshooting strategies? (Choose two)

- A. Use show fctimer command to verify correct timer settings on each fabric.
- B. Verify Rxbuffer size match on both ends of ISL.
- C. Check domain IDs on each site of ISL to ensure they are unique.
- D. Verify speed configuration on both E_Ports.
- E. Use Fabric Manager to verify active zone set is identical on both switched.

Answer: A, B

QUESTION 162:

Exhibit

```

MDS9509-core1#
MDS9509-core1# sh environment power

PS Model          Power      Power      Status
      (Watts)  (Amp @42V)
-----
1 DS-CAC-2500M    1153.32   27.46     ok
2 DS-CAC-2500M    1153.32   27.46     ok

Mod Model          Power      Power      Power      Power      Status
  Requested Requested  Allocated  Allocated
      (Watts)  (Amp @42V) (Watts)    (Amp @42V)
-----
1 DS-X9032         199.02    4.70      199.02    4.70     powered-up
2 DS-X9010         220.08    5.24      220.08    5.24     powered-up
3 DS-X9010         220.08    5.24      220.08    5.24     powered-up
4 DS-X9010         220.08    5.24      220.08    5.24     powered-up
5 DS-X9530-SF1-K9  220.08    5.24      220.08    5.24     powered-up
6 DS-X9530-SF1-K9  220.08    5.24      220.08    5.24     powered-up
7 DS-X9308-SMIF    210.00    5.00      210.00    5.00     powered-up

```

The exhibit shows portions of the power status and consumption of an MDS 9509. Given the power consumption of each module, how should the power supplies be configured?

- A. redundant
- B. non-redundant (separate)
- C. non-redundant (combined)
- D. loadsharing combined

Answer: C

QUESTION 163:

What are two redundancy features that are built into the MDS 9500 platform? (Choose two)

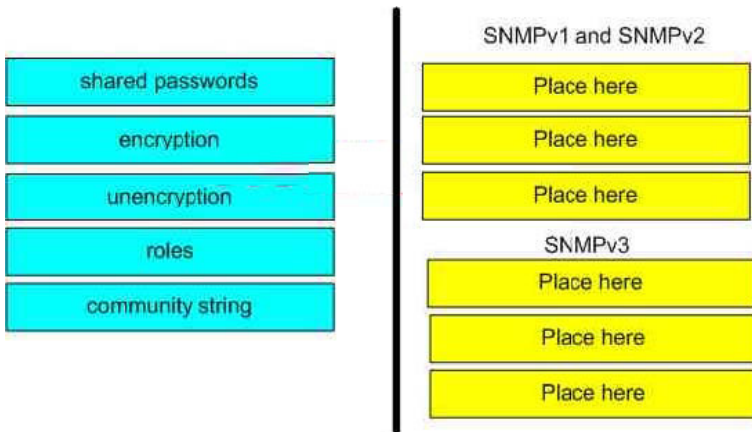
- A. stateful process restart
- B. dual supervisor engines
- C. microkernel adaptive response software
- D. DC power option
- E. Call-home feature

Answer:

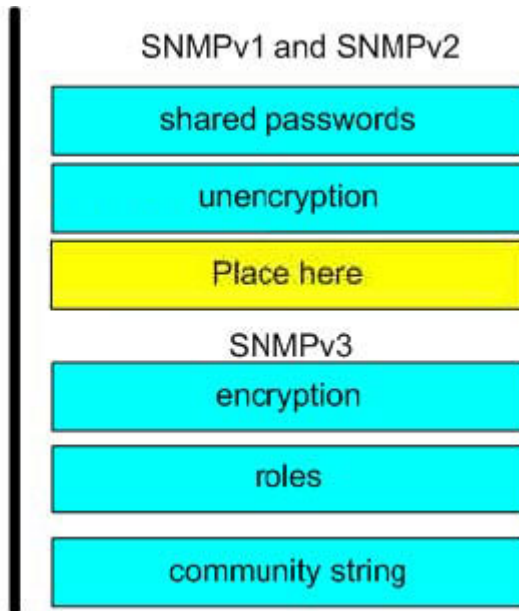
QUESTION 164:

DRAG DROP

Place the following capabilities into the appropriate groups.



Answer:



QUESTION 165:

When a particular VSAN is configured as the SPAN source, which two interfaces are included? (Choose two)

- A. Physical ports in the VSAN
- B. Sub-fc interfaces
- C. Ethernet management interface
- D. Port channels in the VSAN

Answer: A, D

QUESTION 166:

DRAG DROP

The IT Directory wants to standardize the process that the SAN team follows when troubleshooting the SAN. He wants to leverage the tools provided by Fabric Manager so that each member of the team executes the same steps when faced with a problem in the SAN.

Match the FM troubleshooting tool with the purpose it serves in the repair strategy. You may not use all options.

End-to-End Connectivity	Determine any problems that affect the components of a specific switch	Place here
Device Manager	Determine connectivity and routes among devices with the switch fabric	Place here
Zone Merge	Compare the current configuration of a switch to that of another specified switch	Place here
Fabric Configuration	Determine if two connected switches have compatible zone configurations	Place here
Switch Health		

Answer:

Device Manager	Determine any problems that affect the components of a specific switch	Switch Health
	Determine connectivity and routes among devices with the switch fabric	End-to-End Connectivity
	Compare the current configuration of a switch to that of another specified switch	Fabric Configuration
	Determine if two connected switches have compatible zone configurations	Zone Merge

QUESTION 167:

What protocol can be used in a multivendor environment to enable greater bandwidth between a Cisco MDS 9000 switch in interop mode and another vendor FC switch?

- A. FSPF
- B. Port channel
- C. FCC
- D. RDL

Answer: A

QUESTION 168:

Identify four attributes of a VSAN. (Choose four)

- A. state attribute
- B. VSAN name attribute

- C. VSAN zone attribute
- D. VSAN ID attribute
- E. Load balancing attribute

Answer: A, B, D, E

QUESTION 169:

Which two features require Cisco Fabric Manager Server? (Choose two)

- A. Historical performance monitoring and reporting.
- B. MDS configuration analysis tools.
- C. Real-time performance monitoring.
- D. Continuous health and event monitoring.
- E. MDS event and security management.

Answer: A, D

QUESTION 170:

What command would a storage administrator use to determine the number of frames that exit the FC2/6 port?

- A. show fc 2/6
- B. fctrace
- C. debug fibrechannel port 2/6
- D. show interface counters brief

Answer: D

QUESTION 171:

Exhibit

```
switch# show role name stg-ngnt
Role: stg-ngnt
Description: Storage Management Role
usan policy: deny
Permitted usans: 10
-----
Rule   Type   Command Type   Feature
-----
1.    permit  config         *
2.    permit  exec           *
3.    permit  clear          *
4.    permit  debug          *
5.    permit  show           *
switch#
```

Exhibit:

When a user RBAC policy is enabled just for VSAN 10, which of the following is true?

- A. Users can add another VSAN.
- B. Users can move a port into VSAN 10.
- C. Users can configure IVR.
- D. Users cannot modify the configuration for any configured port.

Answer: D

QUESTION 172:

Certkiller .com's data center has several MDS 9000 switched connected via Port Channel, carrying multiple VSAN traffic. The ESPP Department has requested that read-only zones be configured for storage belonging to VSAN10, attached to a specific switch (ESPP-B). To enable read-only zones for this scenario, where must the customer installed the Enterprise Package license?

- A. ESPP-B only.
- B. Principal switch for VSAN10 and ESPP-B only.
- C. All VSAN10 switched.
- D. All switched in the fabric.

Answer: D

QUESTION 173:

When a Cisco Traffic Analyzer is being used, in which mode must a Port Analyzer Adapter be connected to an MDS FC switch?

- A. ST
- B. SD
- C. TE
- D. Auto
- E. FX

Answer: B

QUESTION 174:

Exhibit.

```
show vsan
vsan 1 information
name:VSAN0001 state:active
in-order guarantee no interoperability mode:no
loadbalancing src-id/dst-id/oxid
vsan 2 information
name:VSAN0002 state:active
in-order guarantee no interoperability mode:no
loadbalancing src-id/dst-id/oxid
vsan 7 information
name:VSAN0007 state:active
in-order guarantee no interoperability mode:no
loadbalancing src-id/dst-id/oxid
vsan 100 information
name:VSAN0100 state:active
in-order guarantee no interoperability mode:no
loadbalancing src-id/dst-id/oxid
vsan 4094:isolated vsan
```

Exhibit:

When a VSAN is deleted where do its port members get transferred?

- A. vsan 1
- B. vsan 10
- C. vsan 4094
- D. vsan 2

Answer: C

QUESTION 175:

You have set up a session to the SD port to enable the investigation of a problem on a particular FC port. You need to check whether this has been correctly set up for the desired port.

What command should you use?

- A. show span session
- B. show ssh
- C. show tlport
- D. show fcanalyzer

Answer: A

QUESTION 176:

What is the proper command to check the membership of all VSANs configured on an MDS Series switch?

- A. show vsan

- B. show vsan usage
- C. show membership vsan all
- D. show vsan membership

Answer: D

QUESTION 177:

When issuing the Fabric Analyzer command `fcanalyzer local write volititle:sample`, what is the maximum size of the file sample that may be written?

- A. No maximum
- B. 1 MB
- C. 10 MB
- D. 25 MB
- E. 50 MB

Answer: C

QUESTION 178:

The Call Home feature provides what type of notification when critical events occur?

- A. SNMP
- B. Syslog
- C. PBX
- D. E-mail

Answer: D

QUESTION 179:

A host system can not write to one of the LUNs configured on a storage port. Both devices are connected to the same switch.

Which two items would be most relevant to your troubleshooting efforts? (Choose two)

- A. Verify HBA N_Port name server registration.
- B. Verify storage subsystem N_port name server registration.
- C. Verify the storage subsystem logs or LUN masking database.
- D. Verify the host has exclusive access to the LUN.
- E. Verify that any single zone in the active zone set contains both members.
- F. Verify both N_ports are in the same VSAN.

Answer: C, D

QUESTION 180:

Issuing the show role command to check a defined role in an MDS 9000 Series switch will produce the following output:

Role: Manage

VSAN Description:

vsan policy: deny Permitted vsans: 24

Rule Type Command-type Feature

1. permit config *
2. deny config fspf
3. permit debug zone
4. permit exec fcping

Which of the following two functions can a user with role Manage undertake?

(Choose two)

- A. Change fspf parameter .
- B. Configure FC port parameters for VSAN 3.
- C. Issue a debug command for a port.
- D. Configure zoning for all VSANs.
- E. check connectivity for VSAN 2.

Answer: B, E

QUESTION 181:

What software component is used for the Cisco Traffic Analyzer for Fibre Channel?

- A. Ethereal
- B. Ntop
- C. CSM software
- D. CiscoWorks RME

Answer: B

QUESTION 182:

You are looking at the LEDs on an MDS 9500 Supervisor module. If the Status LED is orange, which statement is true?

- A. The module cannot boot because of a corrupted image of the flash.
- B. The diagnostic test failed.
The module is not operational because a fault occurred.
- C. The module is booting or running diagnostics.
- D. Incompatible power supplies are installed.

Answer: C

QUESTION 183:

How can Fiber Channel traffic be captured?

- A. Establish a trace on the Supervisor engine.
- B. Use the Fabric and Device Manager.
- C. Use the Port Adapter Analyzer and SPAN.
- D. Use the debug port command.

Answer: C

QUESTION 184:

Whom should the field OSM staff or channel partners contact for MDS 9000 technical support?

- A. Cisco TAC
- B. OSM technical specialist
- C. Cisco service account manager
- D. Cisco account SE
- E. OSM Support Center

Answer: E

QUESTION 185:

Zone membership is specified using Port WWN, Fabric WWN, Switch WWN, or the Fabric ID. Inter-VSAN Zone membership is specified using a combination of the VSAN and which of the following?

- A. Port WWN
- B. Fabric WWN
- C. Switch WWN
- D. Fabric ID

Answer: A

QUESTION 186:

When connecting a Port Analyzer Adapter to an MDS 9000 family switch, the Fibre Channel port on the MDS side is configured as?

- A. TL_Port: Translative Loop Port

- B. TE_Port: Trunking E_Port
- C. SD_Port: SPAN destination port
- D. Fx_Port: operates in either F_Port or FL_Port mode

Answer: C

QUESTION 187:

What is the default policy when defining role-based access for a VSAN?

- A. Deny
- B. Permit
- C. Permit only for the default VSAN.
- D. There is not default role policy for a VSAN.

Answer: B

QUESTION 188:

What is the result of entering the command: `switch(config-role-vsan)# permit vsan 15-20`?

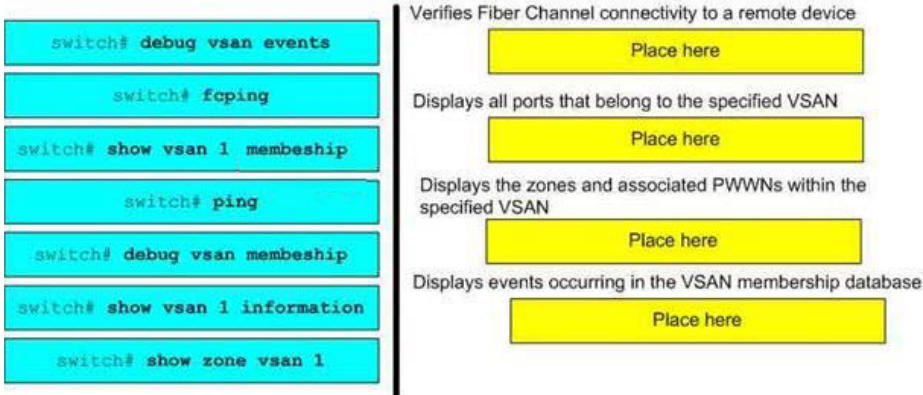
- A. The command adds the permission for this role to perform commands for VSANs 15 through 20.
All other configured VSANs in this role would be denied.
- B. The command removes the permission for this role to perform commands or VSANs 15 and 20.
All other configured VSANs in this role would be permitted.
- C. The command removed permission for all VSAN in this role.
- D. It is not a valid command since the command must be entered at the switch `(config-fole-policy-vsan)#` level.

Answer: A

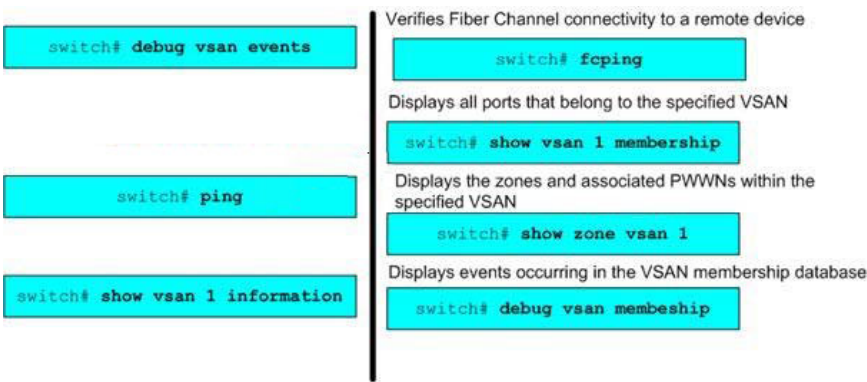
QUESTION 189:

DRAG DROP

Match the troubleshooting SAN-OS command with its corresponding output. You may no use all options.



Answer:



QUESTION 190:

Which three CLI commands can be used to view remaining buffer-to-buffer credits? (Choose three)

- A. show interface fc x/y
- B. show interface fc x/y brief
- C. show interface fc x/y counters
- D. show interface fc x/y bbcredit
- E. show interface fc x/y flow-control

Answer: A, C, D

QUESTION 191:

Exhibit



Exhibit:

The ISL between the switched is configured so that the E port on the MDS 9506 belongs to VSAN 10 while the E port on the MDS 9216 is a member of VSAN 20. The FX port connected to the array is in VSAN 10 and the FX port connected to the host is in VSAN20.

Which statement is true with regard to the host and storage array?

- A. The host and array FLOGI will fail because of the VSAN mismatch.
- B. The host and array PLOGI will fail because the host and array register with different Name Service instances.
- C. The host and array PRLI will succeed because IVR permits transit between VSAN 10 and VSAN 20.
- D. The host and array PRLI will succeed because VSAN mismatch.

Answer: D

QUESTION 192:

Which four protocols does the Traffic Analyzer support? (Choose four)

- A. FC-SP
- B. SCSI
- C. Extended link services
- D. SW_ILS
- E. FCIP
- F. GS-3

Answer: B, C, D, F

QUESTION 193:

DRAG DROP

Associate the MDS switch booth sequence events with the corresponding process that occurs in that event. You may not use all options.

Loads Loader	POST Place here
Loads security framework	BIOS Place here
Loads Kickstart Image	LOADER Place here
Loads kernel, drivers and SAN-OS	Kickstart Image Place here
Performs line card checks and snake tests	System Image Place here
Loads Login prompt	Place here

Answer:

QUESTION 194:

Before Call Home can be enabled, which four parameters must be configured?
(Choose four)

- A. Street address
- B. Contact person's phone number
- C. Contact person's name (sysContact)
- D. Interop mode
- E. Contact person's e-mail address
- F. Syslog server address

Answer: A, B, C, E

QUESTION 195:

Exhibit



Exhibit:

What is the effect of using the Privacy Password?

- A. The management platform will use SNMPv3 for communication.
- B. The privacy password is required if the user has Administrator capabilities on the MDS.
- C. The privacy password is always required.
- D. The privacy password is entered when you want to encrypt management traffic.
- E. The privacy password is required if you want to use SNMPv3 for management traffic.

Answer: D

QUESTION 196:

What protocol does Cisco Fabric Manager use to provide continuous health and event monitoring for the Cisco MDS 9000 family of switches?

- A. SNMP
- B. WEBM
- C. SES
- D. SMI-S

Answer: A

QUESTION 197:

Which three types of network statistics can be created with the Traffic Analyzer?
(Choose three)

- A. Per-LUN statistics
- B. Total bandwidth used
- C. Tx/Rx bandwidth per VSAN
- D. Tx/Rx bandwidth per N_Port
- E. Class-based traffic breakdown

Answer: B, C, D

QUESTION 198:

What MDS feature requires the Enterprise Package to be installed?

- A. FCIP compression
- B. FICON
- C. Inter-VSAN Routing
- D. Performance Manager

Answer: C

QUESTION 199:

Which four MDS feature packages require a license? (Choose four)

- A. FCIP
- B. Fabric Manager Server
- C. Port Channel
- D. Read Only Zone
- E. VSAN
- F. FICON

Answer: A, B, D, F

QUESTION 200:

What are four valid protocols for copying software to the MDS 9000 family switched? (Choose four)

- A. Remote Copy Service
- B. Secure Copy Protocol
- C. Trivial File Transfer Protocol
- D. File Transfer Protocol
- E. Secure Trivial File Transfer Protocol
- F. Secure File Transfer Protocol

Answer: B, C, D, F

QUESTION 201:

Which two pieces of troubleshooting information does the output of the show vsan 1 command provide? (Choose two)

- A. VSAN name
- B. List of ports assigned to VSAN 1
- C. VSAN state
- D. Inter-VSAN routing information
- E. Zone information for the zones configured within VSAN 1

Answer: A, C

QUESTION 202:

In 1.3X, when a licensed feature is enabled without a license key, the MDS switch enables the feature and starts a counter on the grace period.

You then have how many days to install the appropriate license keys or disable the use of that feature?

- A. 30
- B. 45
- C. 60
- D. 90

Answer: C

When a licensed feature is enabled without a license key, the MDS switch enables the feature and starts a counter on the grace period. You then have 60 days to install the appropriate license keys or disable the use of that feature. If at the end of the 60 day grace period the switch does not have a valid license key for the feature, the feature is automatically disabled by the switch.

QUESTION 203:

Inter-VSAN Routing is interoperable with other vendor switched as long as MDS switched are set to inter-op 1 mode.

Where in the fabric can the other vendor switches reside for a successful implementation of Inter-SAN Routing?

- A. core switches
- B. edge switched
- C. distribution switches
- D. remote site switches

Answer: B

IVR Guidelines

Before configuring an IVR SAN fabric, consider the following guidelines:

Configure unique domain IDs across all VSANs and switches participating in IVR operations. The following switches participate in IVR operations:

All edge switches in the edge VSANs (source and destination)

All switches in transit VSANs

Configure IVR only in the relevant border switches.

An Enterprise License Package is required for this feature.

If you change any FSPF link cost, ensure that the FSPF path distance (that is, the sum of the link costs on the path) of any IVR path is less than 30,000.

IVR-enabled VSANs must be configured in no interop (default) mode or interop 1 mode.

QUESTION 204:

Where will OSM field staff or channel partners obtain SAN-OS software updates?

- A. Cisco TAC
- B. On-line at www.cisco.com
- C. Cisco product support specialist
- D. OSM's support organization

Answer: D

QUESTION 205:

Which of the following configuration and operational parameters are preserved on MDS 9000 family switched when the configuration file is erased and the switch is rebooted?

- A. The cached FCID information is retained.
- B. The FC switchport parameters are retained.
- C. GigEther interface addresses are retained.
- D. VSAN interface addresses are retained.
- E. Zone database configuration is retained.

F. Active zone database information is retained.

Answer: F

QUESTION 206:

What is the minimum polling interval within the Device Manager Summary View?

- A. 1 second
- B. 2 seconds
- C. 5 seconds
- D. 10 seconds
- E. 30 seconds

Answer: C

QUESTION 207:

What MDS feature can be used to notify an administrator or call center that a serious event has occurred in the fabric?

- A. Call Home
- B. FCC
- C. FLOGI
- D. Logging
- E. SPAN

Answer:

QUESTION 208:

Which two RMON groups does the MDS 9000 use? (Choose two)

- A. Statistics
- B. Alarm
- C. Matric
- D. Packet capture
- E. Events
- F. History

Answer: B, E

QUESTION 209:

While attempting to add a new Fibre Channel device to port fc7/31, the link fails to initialize. Entering the command show interface fc7/31 returns the following output:

fc7/31 is shown (Fcot not present).

What is the best troubleshooting choice?

- A. Verify optical fiber matched with laser type (ex. Multimode fiber for shortwave laser and single mode fiber for longwave laser).
- B. Verify switch port type is valid for device type.
- C. Verify SFP functionality by reseating or replacing.
- D. Verify optical fiber continuity with an optical tester.
- E. Verify speed configuration on the switch port.

Answer:

QUESTION 210:

If the Fibre Channel speed is set at 2 Gbps and the Ethernet speed is set at 1 Gbps and all packets on the Fibre Channel side are 2164 bytes in size, you must configure the Port Analyzer Adapter to one of two modes.

What are the two modes? (Choose two)

- A. No Truncate Mode (NTM)
- B. Ethernet Truncate Mode (ETM)
- C. Shallow Truncate Mode (STM)
- D. Management Mode (MNM)
- E. Deep Truncate Mode (DTM)

Answer: C, E

QUESTION 211:

When the Ethernet port of a Cisco MDS 9000 family Port Analyzer Adapter is configured in 1 Gbps mode, what is the state of the LED that is associated with that mode?

- A. green
- B. amber
- C. blinking green
- D. off

Answer: D

QUESTION 212:

If you move a licensed Supervisor Module from one MDS Director Switch to another, what is the impact in the new switch environment?

- A. The current license will work in either Supervisor slot in the other switch.

- B. The current license will not work.
- C. The current license will work as long as the Supervisor Module is placed in the same slot as it was in the previous switch.
- D. The current license will work, however, a switch reload is required.

Answer: B

QUESTION 213:

For comprehensive and detailed trend analysis, which two elements are required?
(Choose two)

- A. Cisco Traffic Analyzer
- B. Cisco Resource Manager Essentials
- C. Cisco Data Collection Engine
- D. Cisco Port Analyzer Adapter
- E. Cisco Traffic Collector

Answer: A, D

QUESTION 214:

What three steps must you complete before configuring Inter-VSAN Routing?
(Choose three)

- A. Enable a routing protocol.
- B. Configure unique domain IDs across all VSANs and switches used in IVR operations.
- C. Configure IVR only on relevant border switches.
- D. Obtain an enterprise license package.
- E. Enable FSPF.

Answer: B, C, D

QUESTION 215:

In Fabric Manager, the storage administrator sees a red line through one of the switches in the map. What two things can the administrator do to troubleshoot the error alert? (Choose two)

- A. Verify that one of the power supplies of the switch has not failed.
- B. Use the Zone Wizard to create valid zones for switch participation.
- C. Execute the fcping command to verify that Fibre Channel connectivity exists between the nodes and the fabric.
- D. Verify that all switch modules are plugged in and are on line.

Answer: A, D

QUESTION 216:

Which three characteristics does an SD port have? (Choose three)

- A. It ignores buffer-to-buffer credits.
- B. It allows data traffic in the egress (tx) and ingress (rx) directions.
- C. It does not require a device or an analyzer to be physically connected.
- D. Port mode cannot be changed if it is being used for a SPAN session.

Answer: A, C, D

QUESTION 217:

Which three command options does Call Home support? (Choose three)

- A. XML-destination
- B. HTML-destination
- C. short-txt-destination
- D. full-txt-destination

Answer: A, C, D

QUESTION 218:

Exhibit

```
switch# show interface fc1/11
fc1/11 is up
Hardware is Fibre Channel
Port WWN is 20:0b:00:05:30:00:59:de
Admin port mode is ST
Port mode is ST
Port vsan is 1
Speed is 1 Gbps
Rspan tunnel is fc-tunnel 100
Beacon is turned off
5 minute input rate 148 bits/sec 31 bytes/sec 0 fc-tunnel/sec
5 minute output rate 176 bits/sec 22 bytes/sec 0 fc-tunnel/sec
6862 frames input, 444232 bytes
0 discards, 0 errors
0 CRC, 0 unknown class
0 too long, 0 too short
6862 frames output, 307072 bytes
0 discards, 0 errors
0 input OLS, 0 LRR, 0 NOS, 0 loop inits
0 output OLS, 0 LRR, 0 NOS, 0 loop inits
16 receive B2B credit remaining
3 transmit B2B credit remaining.
```

Exhibit:

In the output of the shown interface command, which two statements are correct? (Choose two)

- A. This is a Fibre Channel port running at 2 Gbps.
- B. This port cannot be attached to any device.
- C. This port is in slot 11 in the switch.

- D. This port is in multiple VSANs.
- E. This port mode is specified to MDS 9000 switches.

Answer: B, E

QUESTION 219:

Which command is used to display the list of hosts configured for Fabric Analyzer remote capture?

- A. show fcanalyzer
- B. clear fcanalyzer
- C. show remote fcanalyzer
- D. show fcanalyzer remote list

Answer: A

QUESTION 220:

When using interop mode on an MDS 9000 switch, what is the Domain ID range?

- A. 1 to 97
- B. 127 to 239
- C. 97 to 239
- D. 97 to 127
- E. 1 to 127

Answer: D